

# HPLC Application

ID No.: 23912

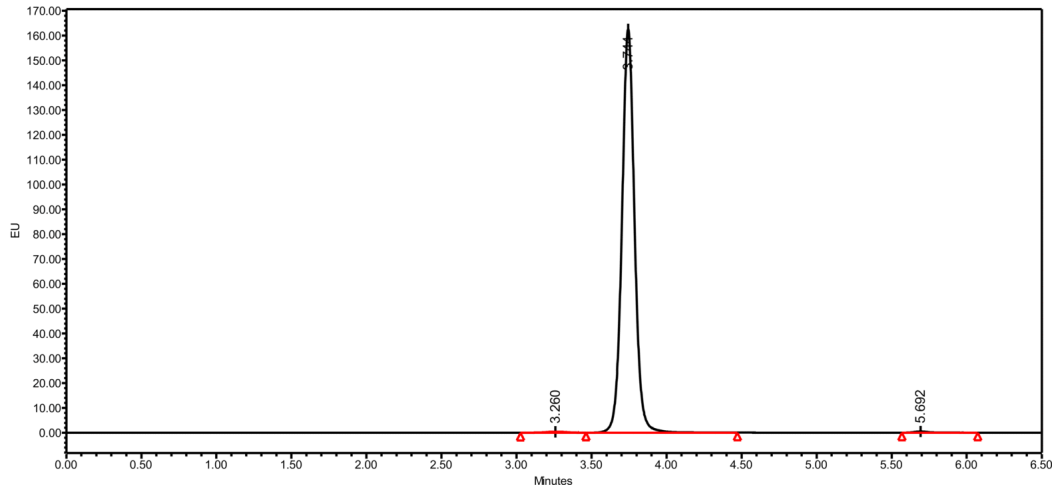
## Trastuzumab on Yarra SEC-X300

**Column:** N/A  
**Dimensions:** N/A  
**Order No:** N/A  
**Elution Type:** N/A  
**Eluent A:** 50 mM Potassium Phosphate, 250 mM KCl, pH 6.8  
**Gradient**

Step No.	Time (min)	Pct A
1	0	100

**Profile:**  
**Flow Rate:** 0.35 mL/min  
**Col. Temp.:** ambient  
**Detection:** Fluorescence (FLUOR) @ 280 nm (25 °C)

23912



### ANALYTES:

1 Trastuzumab

