

GC Application

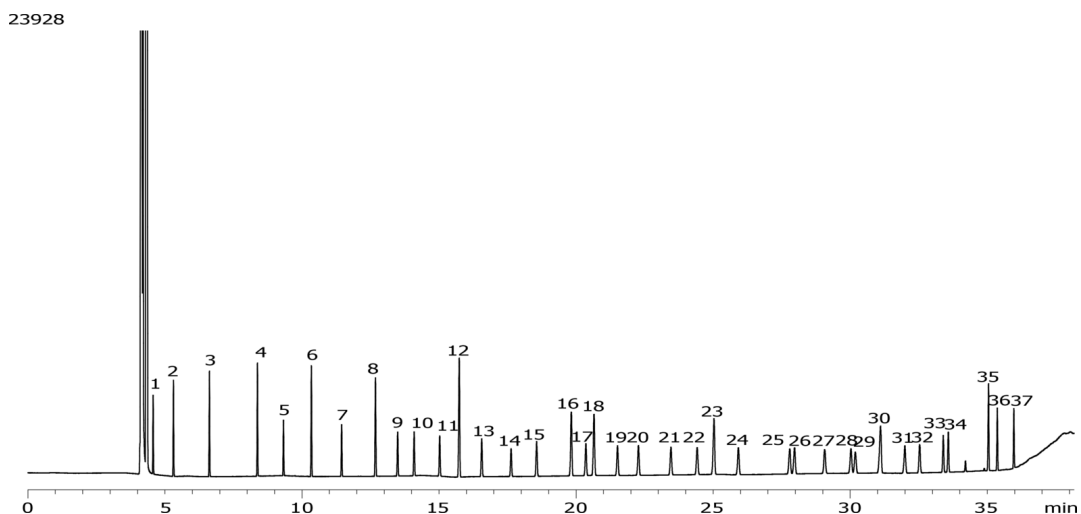
ID No.: 23928

37 FAMES by GC/FID on Zebron ZB-FAME (60 m)

Column: Zebron ZB-FAME, GC Cap.Column 60m x 0.25mm x 0.2µm, Ea
Phase: Proprietary Pesticides Phase
Dimensions: 60 meters x 0.25 mm x 0.2 µm
Order No: 7KG-G033-10
Oven Profile: 100 °C for 2 min to 165 °C @ 10 °C/min to 200 °C @ 1.5 °C/min to 280 °C @ 15 °C/min for 1 min
Carrier Gas: Constant Flow Helium, 1.2 mL/min
Injection: Split 50:1 1 µL @ 240°C
Detection: Flame Ionization (FID) (260°C)
Analyst Note: Recommended Accessories:
Recommended Liner: Zebron PLUS Single Taper with Wool, 4 mm ID
Liner Part No.: AG2-0A11-05 (for Agilent systems)
Inlet Seal: AG0-8620 (Gold Plated Easy Seal)
Septum: AG0-4696 (PhenoRed-400)



Products used in this application:



37 FAMES by GC/FID on Zebron ZB-FAME (60 m)

ANALYTES:

- 1 C4:0
- 2 C6:0
- 3 C8:0
- 4 C10:0
- 5 C11:0
- 6 C12:0
- 7 C13:0
- 8 C14:0
- 9 C14:1 cis 9
- 10 C15:0
- 11 C15:1 cis 10
- 12 C16:0
- 13 C16:1 cis 9
- 14 C17:0
- 15 C17:1 cis 10
- 16 C18:0
- 17 C18:1 trans 9
- 18 C18:1 cis 9
- 19 C18:2 trans 9,12
- 20 C18:2 cis 9,12
- 21 C18:3 cis 6,9,12
- 22 C18:3 cis 9,12,15
- 23 C20:0
- 24 C20:1 cis 11
- 25 C20:2 cis 11,14
- 26 C21:0
- 27 C20:3 cis 8,11,14
- 28 C20:4 cis 5,8,11,14
- 29 C20:3 cis 11,14,17
- 30 C22:0
- 31 C22:1 cis 13
- 32 C20:5 cis 5,8,11,14,17
- 33 C22:2 cis 13,16
- 34 C23:0
- 35 C24:0
- 36 C24:1 cis 15
- 37 C22:6 cis 4,7,10,13,16,19

