

# HPLC Application

ID No.: 23941

## Bath salts (250ng/ml) from urine using Kinetex 2.6u C18 50x4.6mm - Extracted sample

**Column:** Kinetex® 2.6 µm C18 100 Å, LC Column 50 x 4.6 mm, Ea

**Dimensions:** 50 x 4.6 mm ID

**Order No:** 00B-4462-E0

**Elution Type:** Gradient

**Eluent A:** Water with 0.1% formic acid

**Eluent B:** AcCN with 0.1% formic acid

Gradient Profile:	Step No.	Time (min)	Pct A	Pct B
	1	0	95	5
	2	4	5	95
	3	4.1	95	5
	4	6	95	5

**Flow Rate:** 700 mL/min

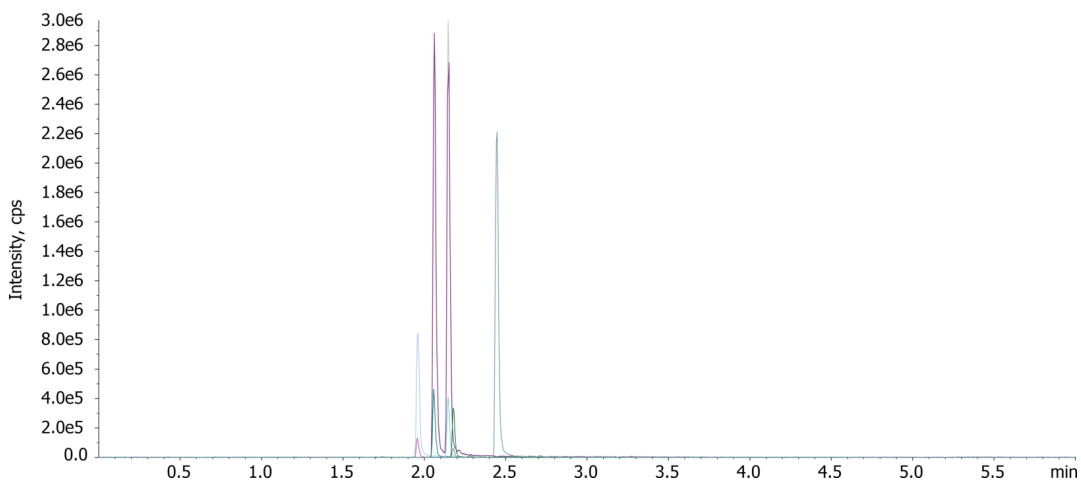
**Col. Temp.:** ambient

**Detection:** Tandem Mass Spec (MS-MS) @ (ambient)

**Detector Info:** <a target="\_blank" href="https://sciex.com/products/mass-spectrometers?utm\_campaign=2019%20application%20search&utm\_source=phenomenex&utm\_medium=referral">SCIEX</a>



Products used in this application:



### ANALYTES:

- 1** Methylone  
Retention Time: 1.96 min
- 2** Ethylone  
Retention Time: 2.06 min
- 3** Butylone  
Retention Time: 2.15 min
- 4** Mephedrone  
Retention Time: 2.18 min
- 5** Alpha-PVP  
Retention Time: 2.44 min

