

HPLC Application

ID No.: 23944

Bath salts (50ng/ml) from blood using Kinetex 2.6u C18 50x4.6mm - Extracted sample

Column: Kinetex® 2.6 µm C18 100 Å, LC Column 50 x 4.6 mm, Ea

Dimensions: 50 x 4.6 mm ID

Order No: 00B-4462-E0

Elution Type: Gradient

Eluent A: Water with 0.1% formic acid

Eluent B: AcCN with 0.1% formic acid

Gradient Profile:	Step No.	Time (min)	Pct A	Pct B
	1	0	95	5
	2	4	5	95
	3	4.1	95	5
	4	6	95	5

Flow Rate: 700

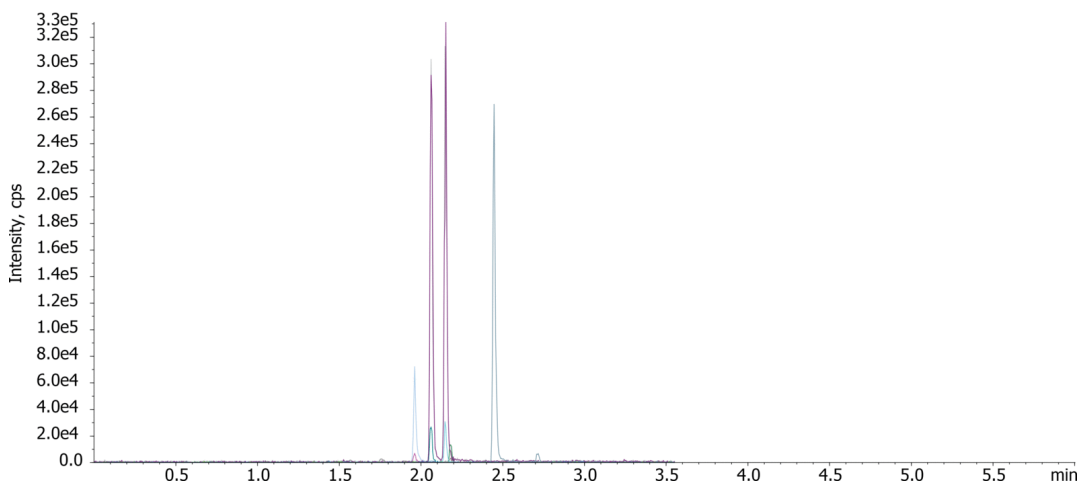
Col. Temp.: ambient

Detection: Tandem Mass Spec (MS-MS) @ (ambient)

Detector Info: SCIEX



Products used in this application:



ANALYTES:

- 1 Methylone
Retention Time: 1.96 min
- 2 Ethylone
Retention Time: 2.06 min
- 3 Butylone
Retention Time: 2.15 min
- 4 Mephedrone
Retention Time: 2.18 min
- 5 Alpha-PVP
Retention Time: 2.44 min

