

HPLC Application

ID No.: 23964

Cyclosporin USP on Luna Omega 1.6µm Polar C18 50x2.1mm

Column: Luna Omega 1.6 µm Polar C18 100 A LC Column 50 x 2.1 mm, Ea

Dimensions: 50 x 2.1 mm ID

Order No: 00B-4748-AN

Elution Type: Isocratic

Eluent A: Acetonitrile, tert-butyl methyl ether, water, and phosphoric acid (430:50:520:1)

Gradient	Step No.	Time (min)	Pct A
Profile:	1	30	100

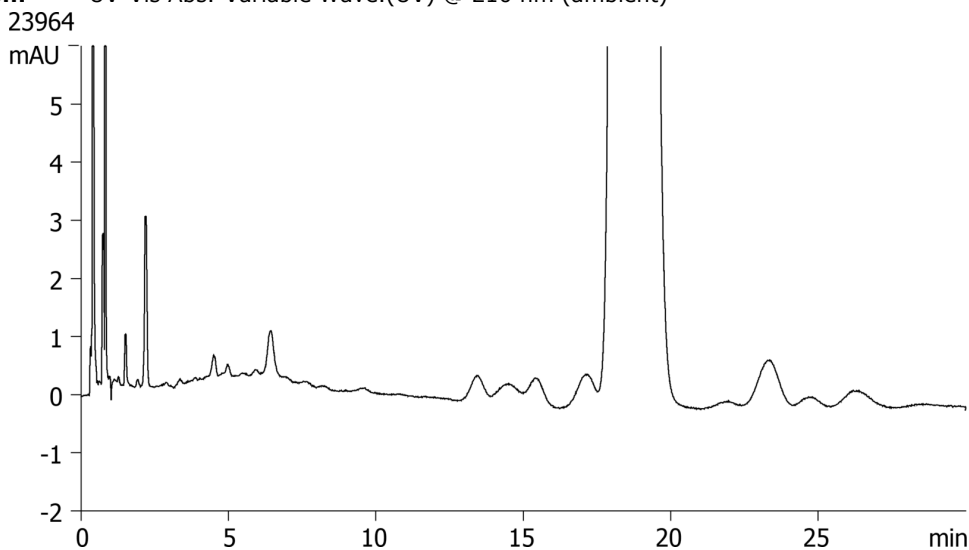
Flow Rate: 0.3 mL/min

Col. Temp.: 80 °C

Detection: UV-Vis Abs.-Variable Wave.(UV) @ 210 nm (ambient)



Products used in this application:



ANALYTES:

- 1 Cyclosporin

