

HPLC Application

ID No.: 24037

Water Soluble Vitamins on Luna Omega 3 µm Polar C18 100x4.6mm

Column: Luna® Omega 3 µm Polar C18 100 Å, LC Column 100 x 4.6 mm, Ea

Dimensions: 100 x 4.6 mm ID

Order No: 00D-4760-E0

Elution Type: Gradient

Eluent A: 20mM Potassium Phosphate pH 3.5

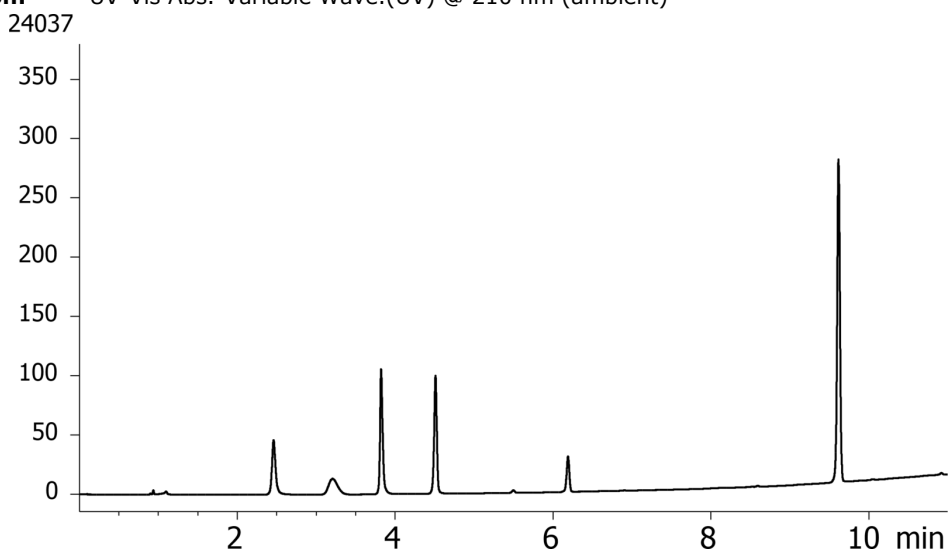
Eluent B: Methanol

Gradient Profile:	Step No.	Time (min)	Pct A	Pct B
	1	0	100	0
	2	1	100	0
	3	10	40	60
	4	11	40	60
	5	11.1	100	0
	6	15	100	0

Flow Rate: 1.2 mL/min

Col. Temp.: ambient

Detection: UV-Vis Abs.-Variable Wave.(UV) @ 210 nm (ambient)



ANALYTES:

- 1 Thiamine
- 2 Nicotinamide
- 3 Pyridoxal
- 4 Pyridoxine
- 5 Panthothenic Acid
- 6 Riboflavin



Products used in this application:

