

HPLC Application

ID No.: 24047

Cold Medications on Kinetex 2.6u Biphenyl 100x4.6mm

Column: Kinetex[®] 2.6 μ m Biphenyl 100 Å, LC Column 100 x 4.6 mm, Ea

Dimensions: 100 x 4.6 mm ID

Order No: 00D-4622-E0

Elution Type: Gradient

Eluent A: 20mM Potassium Phosphate pH 3.5

Eluent B: Acetonitrile

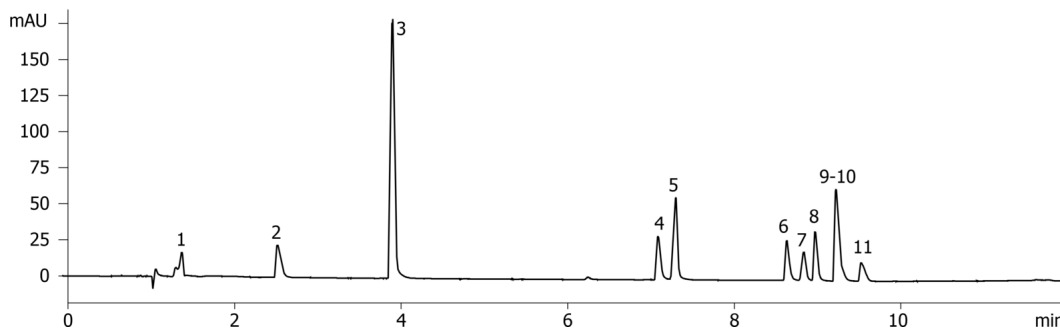
Gradient Profile:	Step No.	Time (min)	Pct A	Pct B
	1	0	98	2
	2	7	70	30
	3	12	20	80

Flow Rate: 1 mL/min

Col. Temp.: ambient

Detection: UV-Vis Abs.-Variable Wave.(UV) @ 254 nm (ambient)

24047



Products used in this application:



Cold Medications on Kinetex 2.6u Biphenyl 100x4.6mm

ANALYTES:

- 1 Maleic Acid
- 2 Phenylephrine
- 3 Acetaminophen
- 4 Doxylamine
- 5 Pyrilamine
- 6 Chlorpheniramine
- 7 Dextromethorphan
- 8 Brompheniramine
- 9 4-Nitrophenol + Acetylsalicylic Acid
- 10 Diphenhydramine

