

# HPLC Application

ID No.: 24049

## Cold Medications on Kinetex 2.6u F5 100x4.6mm

**Column:** Kinetex<sup>®</sup> F5 2.6 $\mu$ m 100 Å, LC Column 100 x 4.6 mm, Ea

**Dimensions:** 100 x 4.6 mm ID

**Order No:** 00D-4723-E0

**Elution Type:** Gradient

**Eluent A:** 20mM Potassium Phosphate pH 3.5

**Eluent B:** Acetonitrile

Gradient Profile:	Step No.	Time (min)	Pct A	Pct B
	1	0	98	2
	2	7	70	30
	3	12	20	80

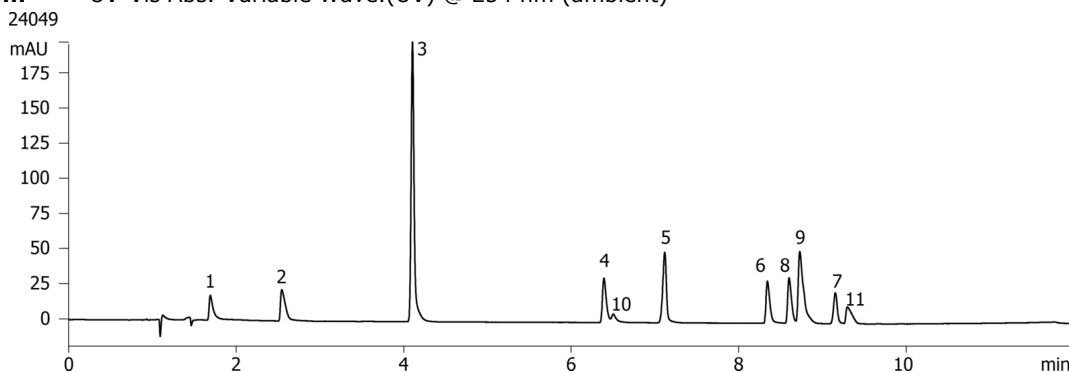
**Flow Rate:** 1 mL/min

**Col. Temp.:** ambient

**Detection:** UV-Vis Abs.-Variable Wave.(UV) @ 254 nm (ambient)



Products used in this application:



## Cold Medications on Kinetex 2.6u F5 100x4.6mm

### ANALYTES:

- 1 Maleic Acid
- 2 Phenylephrine
- 3 Acetaminophen
- 4 Doxylamine
- 5 Acetylsalicylic Acid
- 6 Pyrilamine
- 7 Chlorpheniramine
- 8 Brompheniramine
- 9 4-Nitrophenol
- 10 Dextromethorphan
- 11 Diphenhydramine

