

# HPLC Application

ID No.: 24052

## TCAs on Luna Omega 3u PS C18 100x4.6mm

**Column:** Luna® Omega 3 µm PS C18 100 Å, LC Column 100 x 4.6 mm, Ea

**Dimensions:** 100 x 4.6 mm ID

**Order No:** 00D-4758-E0

**Elution Type:** Gradient

**Eluent A:** 0.1% Formic Acid in Water

**Eluent B:** 0.1% Formic Acid in Acetonitrile

Gradient Profile:	Step No.	Time (min)	Pct A	Pct B
	1	0	90	10
	2	10	5	95

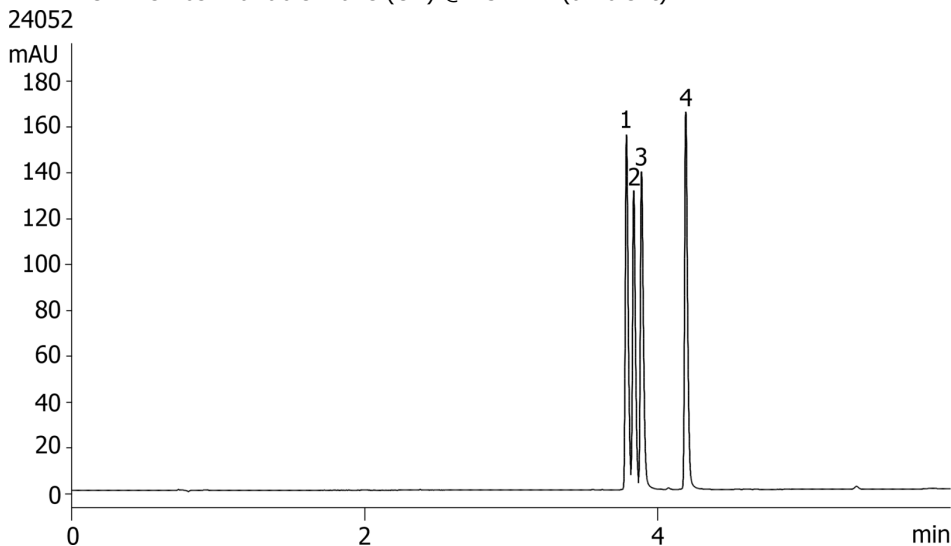
**Flow Rate:** 1.5 mL/min

**Col. Temp.:** ambient

**Detection:** UV-Vis Abs.-Variable Wave.(UV) @ 254 nm (ambient)



Products used in this application:



### ANALYTES:

- 1 Amitriptyline
- 2 Nortriptyline
- 3 Imipramine
- 4 Clomipramine

