

# HPLC Application

ID No.: 24136

## Apomyoglobin mapping using Luna Omega 1.6um C18 for Selectivity

**Column:** Luna Omega 1.6 um C18 100 Å, LC Column 50 x 2.1 mm, Ea

**Dimensions:** 50 x 2.1 mm ID

**Order No:** 00B-4742-AN

**Elution Type:** Gradient

**Eluent A:** Water with 0.1% formic acid

**Eluent B:** Acetonitrile with 0.1% formic acid

Gradient Profile:	Step No.	Time (min)	Pct A	Pct B
	1	0	97	3
	2	30	50	50

**Flow Rate:** 0.5 mL/min

**Col. Temp.:** ambient

**Detection:** Tandem Mass Spec (MS-MS) @ (ambient)

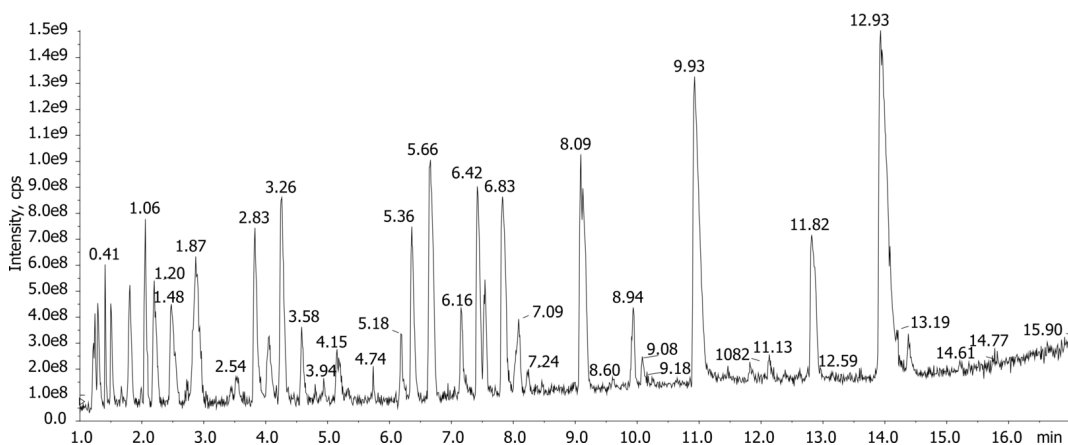
**Detector Info:**

24136

<a target="\_blank" href="https://sciex.com/products/mass-spectrometers?utm\_campaign=2019%20application%20search&utm\_source=phenomenex&utm\_medium=referral">SCIEX<



Products used in this application:



### ANALYTES:

- 1 Apomyoglobin tryptic digest

