

Apomyoglobin mapping using Luna Omega 1.6um Polar C18 for Selectivity

Column: Luna Omega 1.6 um Polar C18 100 A LC Column 50 x 2.1 mm, Ea

Dimensions: 50 x 2.1 mm ID

Order No: 00B-4748-AN

Elution Type: Gradient

Eluent A: Water with 0.1% formic acid

Eluent B: Acetonitrile with 0.1% formic acid

| Gradient Profile: | Step No. | Time (min) | Pct A | Pct B |
|-------------------|----------|------------|-------|-------|
| | 1 | 0 | 97 | 3 |
| | 2 | 30 | 50 | 50 |

Flow Rate: 0.5

Col. Temp.: ambient

Detection: Tandem Mass Spec (MS-MS) @ (ambient)

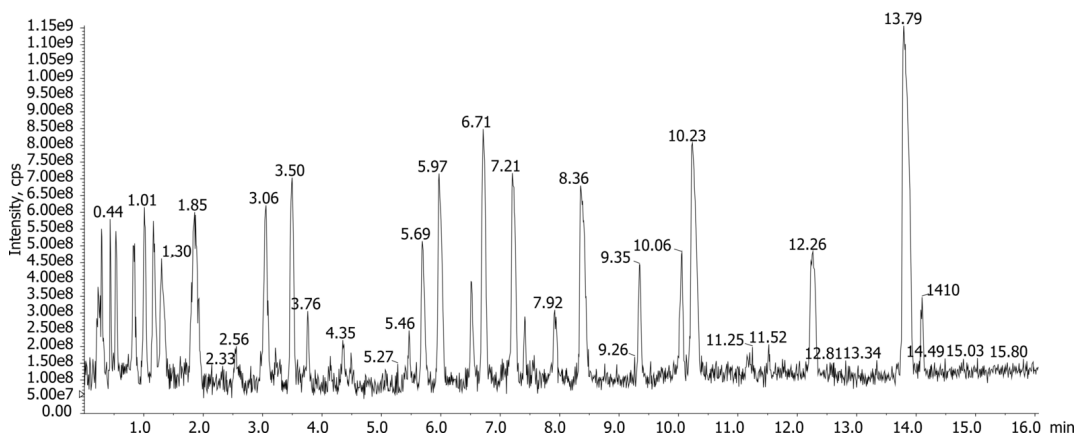
Detector Info: <a target="_blank"

24137

href="https://sciex.com/products/mass-spectrometers?utm_campaign=2019%20application%20search&utm_source=phenomenex&utm_medium=referral">SCIEX<



Products used in this application:



ANALYTES:

- 1 Apomyoglobin tryptic digest

