

# HPLC Application

ID No.: 24142

## Cannabinoids using Kinetex 2.6um Polar C18 150x4.6mm

**Column:** Kinetex<sup>®</sup> 2.6  $\mu$ m Polar C18 100 Å, LC Column 150 x 4.6 mm, Ea

**Dimensions:** 150 x 4.6 mm ID

**Order No:** 00F-4759-E0

**Elution Type:** Gradient

**Eluent A:** Water with 0.1% phosphoric acid

**Eluent B:** Acetonitrile with 0.1% phosphoric acid

Gradient Profile:	Step No.	Time (min)	Pct A	Pct B
	1	0	25	75
	2	6	0	100

**Flow Rate:** 1.8 mL/min

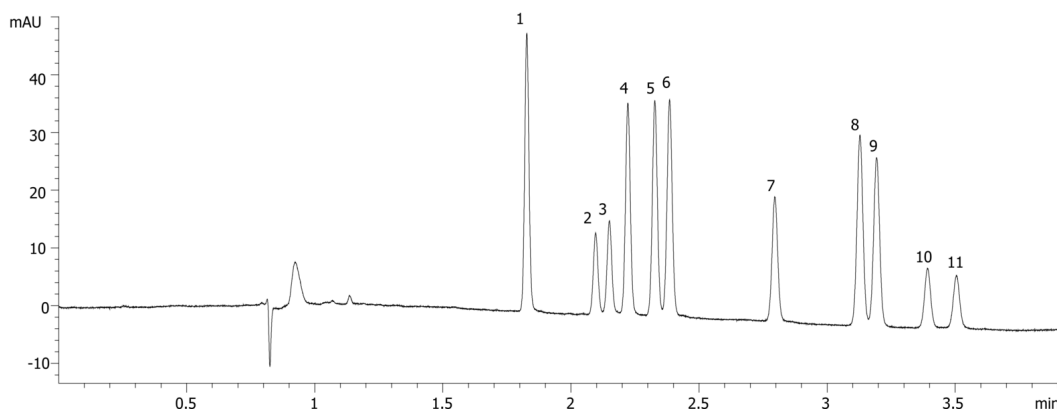
**Col. Temp.:** 50 °C

**Detection:** UV-Vis Abs.-Variable Wave.(UV) @ 210 nm (ambient)

24142



Products used in this application:



## Cannabinoids using Kinetex 2.6um Polar C18 150x4.6mm

### ANALYTES:

- 1 CBDV
- 2 CBD-A
- 3 CBGA
- 4 CBG
- 5 CBD
- 6 THC-V
- 7 CBN
- 8 Delta-9-THC
- 9 Delta-8-THC
- 10 CBC
- 11 THC-A

