

# HPLC Application

ID No.: 24145

## Cannabis pesticide screening using Kinetex 2.6um Polar C18 50x4.6mm

**Column:** Kinetex<sup>®</sup> 2.6 μm Polar C18 100 Å, LC Column 50 x 4.6 mm, Ea

**Dimensions:** 50 x 4.6 mm ID

**Order No:** 00B-4759-E0

**Elution Type:** Gradient

**Eluent A:** 5mM Ammonium Formate + 0.1% formic acid in water

**Eluent B:** 5mM Ammonium Formate + 0.1% formic acid in Methanol 98:2

Gradient Profile:	Step No.	Time (min)	Pct A	Pct B
	1	0	90	10
	2	1	90	10
	3	4.3	20	80
	4	8.7	5	95
	5	10.5	5	95
	6	10.6	90	10
	7	16	90	10

**Flow Rate:** 0.4 mL/min

**Col. Temp.:** 40 °C

**Detection:** Tandem Mass Spec (MS-MS) @ (ambient)

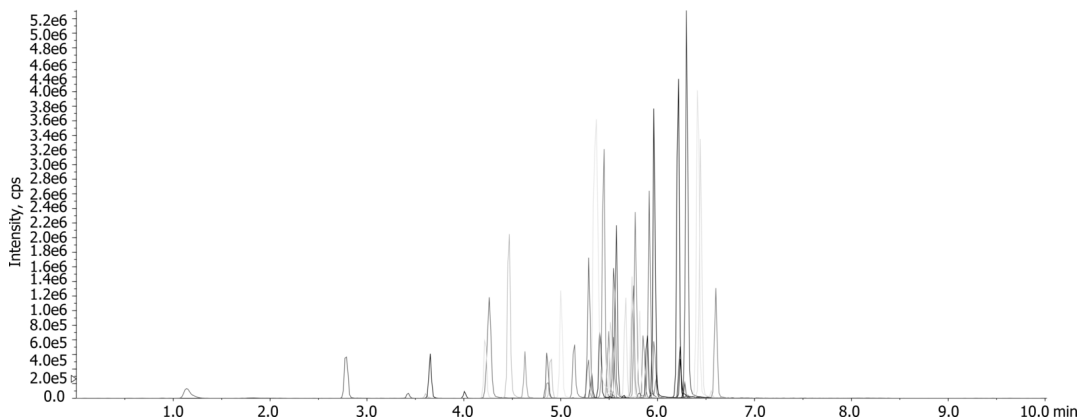
**Detector Info:**

24145

<a target="\_blank" href="https://sciex.com/products/mass-spectrometers?utm\_campaign=2019%20application%20search&utm\_source=phenomenex&utm\_medium=referral">SCIEX<



Products used in this application:



## Cannabis pesticide screening using Kinetex 2.6um Polar C18 50x4.6mm

### ANALYTES:

1	Acephate	41	Oxamyl
2	Acequinocyl	42	Paclbutrazol
3	Acetamiprid	43	Parathion-methyl
4	Aldicarb	44	Permethrin, cis-
5	Avermectin B1a	45	Permethrin, trans-
6	Avermectin B1b	46	Phosmet
7	Azoxystrobin	47	Piperonyl butoxide
8	Bifenazate	48	Prallethrin
9	Bifenthrin	49	Propiconazole
10	Boscalid	50	Propoxure
11	Carbaryl	51	Pyrethrins Cinerin
12	Carbofuran	52	Pyrethrins Jasmolin
13	Chlorantraniliprole	53	Pyrethrins Pyrethrin
14	Chlorpyrifos	54	Pyridaben
15	Clofentezine	55	Spinosyn A
16	Cyfluthrin	56	Spinosyn D
17	Cypermethrin	57	Spiromesifen
18	Daminozide	58	Spirotetramat
19	Diazinon	59	Spiroxamine
20	Dichlorvos	60	Tebuconazole
21	Dimethoate	61	Thiacloprid
22	Ethoprophos	62	Thiamethoxam
23	Etofenprox	63	Trifloxystrobin
24	Etoxazole	64	Uniconazole
25	Fenoxycarb		
26	Fenpyroximate		
27	Fipronil		
28	Fipronil NH4		
29	Flonicamid		
30	Fludioxinil		
31	Hexythiazox		
32	Imazalil		
33	Imidacloprid		
34	Kresoxim-methyl		
35	Malathion A		
36	Metalaxyl		
37	Methiocarb		
38	Methomyl		
39	Myclobutanil		
40	Naled		

