

HPLC Application

ID No.: 24147

Peptide analysis by LCMS using Luna Omega 1.6um PS C18 50x2.1mm

Column: Luna Omega 1.6u PS C18 100A, LC Column 50 x 2.1 mm, Ea

Dimensions: 50 x 2.1 mm ID

Order No: 00B-4752-AN

Elution Type: Gradient

Eluent A: Water with 0.1% formic acid

Eluent B: Acetonitrile with 0.1% formic acid

Gradient Profile:	Step No.	Time (min)	Pct A	Pct B
	1	0	100	0
	2	4	0	100

Flow Rate: 0.5 mL/min

Col. Temp.: 25 °C

Detection: Tandem Mass Spec (MS-MS) @ (ambient)

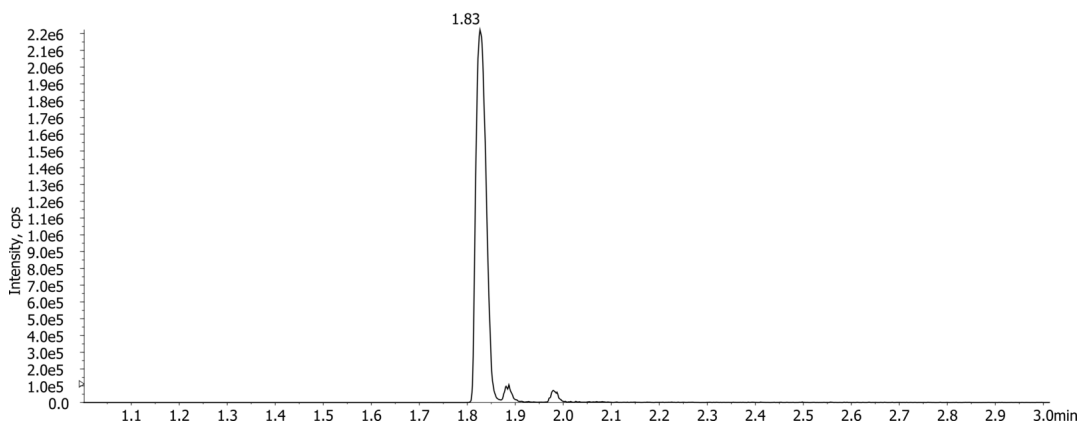
Detector Info: <a target="_blank"

24147

href="https://sciex.com/products/mass-spectrometers?utm_campaign=2019%20application%20search&utm_source=phenomenex&utm_medium=referral">SCIEX<



Products used in this application:



ANALYTES:

- 1 Angiotensin
- 2 Isobaric interference
- 3 Isobaric interference #2

