

# HPLC Application

ID No.: 24148

## Peptide analysis by LCMS using Luna Omega 3um PS C18 50x2.1mm

**Column:** Luna® Omega 3 µm PS C18 100 Å, LC Column 50 x 2.1 mm, Ea

**Dimensions:** 50 x 2.1 mm ID

**Order No:** 00B-4758-AN

**Elution Type:** Gradient

**Eluent A:** Water with 0.1% formic acid

**Eluent B:** Acetonitrile with 0.1% formic acid

Gradient Profile:	Step No.	Time (min)	Pct A	Pct B
	1	0	100	0
	2	4	0	100

**Flow Rate:** 0.5 mL/min

**Col. Temp.:** 25 °C

**Detection:** Tandem Mass Spec (MS-MS) @ (ambient)

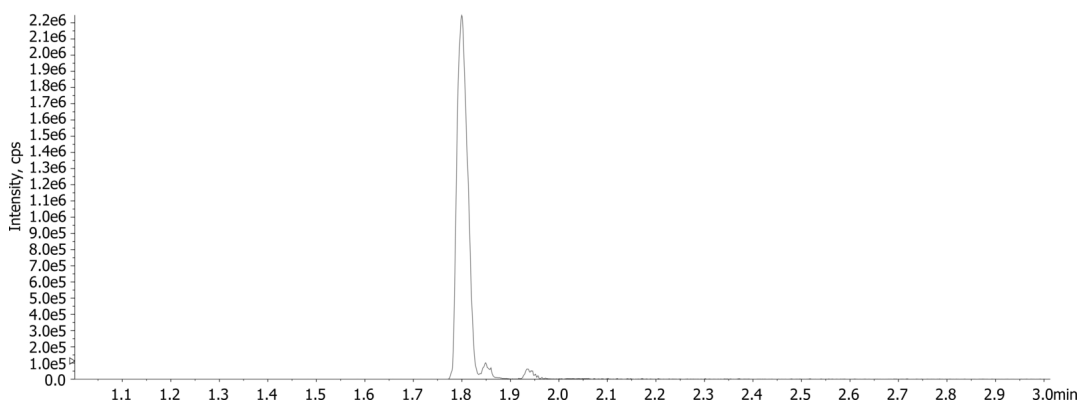
**Detector Info:** <a target="\_blank"

24148

href="https://sciex.com/products/mass-spectrometers?utm\_campaign=2019%20application%20search&utm\_source=phenomenex&utm\_medium=referral">SCIEX<



Products used in this application:



### ANALYTES:

- 1 Angiotensin
- 2 Isobaric interference
- 3 Isobaric interference #2

