

HPLC Application

ID No.: 24151

Peptide mapping by LCMS using Luna Omega 3um PS C18 50x2.1mm

Column: Luna® Omega 3 µm PS C18 100 Å, LC Column 50 x 2.1 mm, Ea

Dimensions: 50 x 2.1 mm ID

Order No: 00B-4758-AN

Elution Type: Gradient

Eluent A: Water with 0.1% formic acid

Eluent B: Acetonitrile with 0.1% formic acid

Gradient Profile:	Step No.	Time (min)	Pct A	Pct B
	1	0	97	3
	2	50	50	50

Flow Rate: 0.5 mL/min

Col. Temp.: 25 °C

Detection: Tandem Mass Spec (MS-MS) @ (ambient)

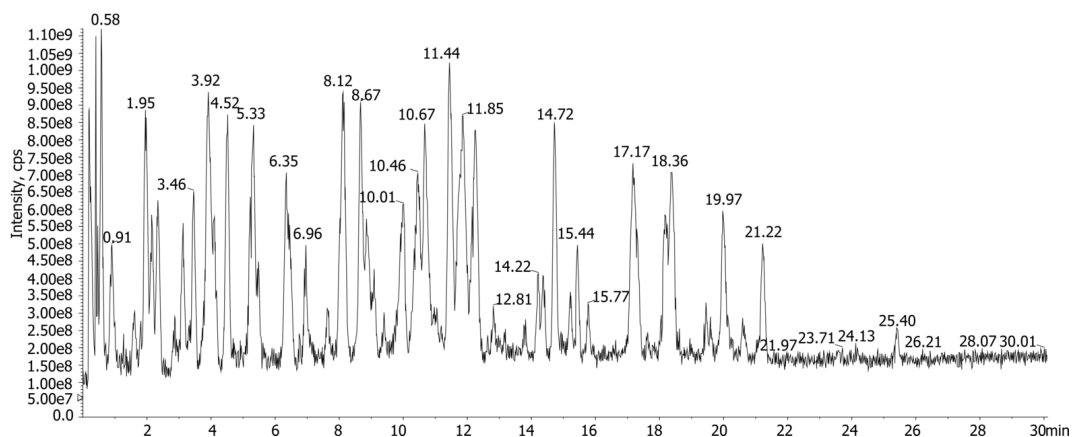
Detector Info: <a target="_blank"

24151

href="https://sciex.com/products/mass-spectrometers?utm_campaign=2019%20application%20search&utm_source=phenomenex&utm_medium=referral">SCIEX<



Products used in this application:



ANALYTES:

- 1 BSA Digest

