

# HPLC Application

ID No.: 24154

## Workplace drug monitoring using Luna Omega 1.6um Polar C18 50x2.1mm

**Column:** Luna Omega 1.6 um Polar C18 100 A LC Column 50 x 2.1 mm, Ea

**Dimensions:** 50 x 2.1 mm ID

**Order No:** 00B-4748-AN

**Elution Type:** Gradient

**Eluent A:** Water with 0.1% formic acid

**Eluent B:** Acetonitrile with 0.1% formic acid

Gradient Profile:	Step No.	Time (min)	Pct A	Pct B
	1	0	100	0
	2	4	0	100

**Flow Rate:** 0.5 mL/min

**Col. Temp.:** 25 °C

**Detection:** Tandem Mass Spec (MS-MS) @ (ambient)

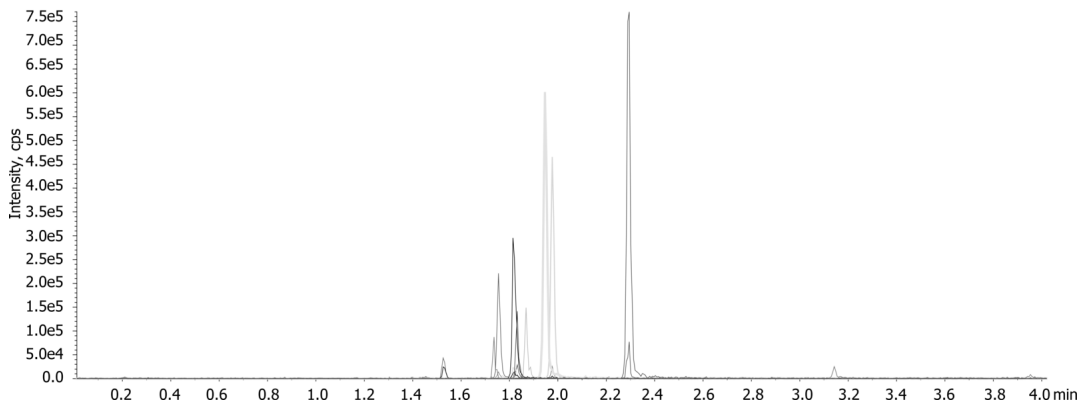
**Detector Info:**

24154

[https://sciex.com/products/mass-spectrometers?utm\\_campaign=2019%20application%20search&utm\\_source=phenomenex&utm\\_medium=referral](https://sciex.com/products/mass-spectrometers?utm_campaign=2019%20application%20search&utm_source=phenomenex&utm_medium=referral)



Products used in this application:



## Workplace drug monitoring using Luna Omega 1.6um Polar C18 50x2.1mm

### ANALYTES:

- 1 Morphine
- 2 Amphetamine
- 3 Codeine
- 4 MDA
- 5 Methamphetamine
- 6 6-MAM
- 7 MDMA
- 8 MDEA
- 9 BZE
- 10 PCP
- 11 THC-OH

