

HPLC Application

ID No.: 24156

Workplace drug monitoring using Luna Omega 5um Polar C18 50x2.1mm

Column: Luna Omega 5u Polar C18 100A, LC Column 50 x 2.1 mm, Ea

Dimensions: 50 x 2.1 mm ID

Order No: 00B-4754-AN

Elution Type: Gradient

Eluent A: Water with 0.1% formic acid

Eluent B: Acetonitrile with 0.1% formic acid

Gradient Profile:	Step No.	Time (min)	Pct A	Pct B
	1	0	100	0
	2	4	0	100

Flow Rate: 0.5 mL/min

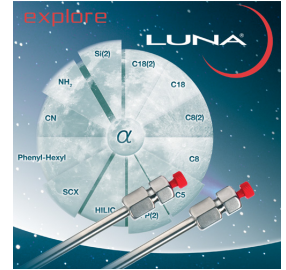
Col. Temp.: 25 °C

Detection: Tandem Mass Spec (MS-MS) @ (ambient)

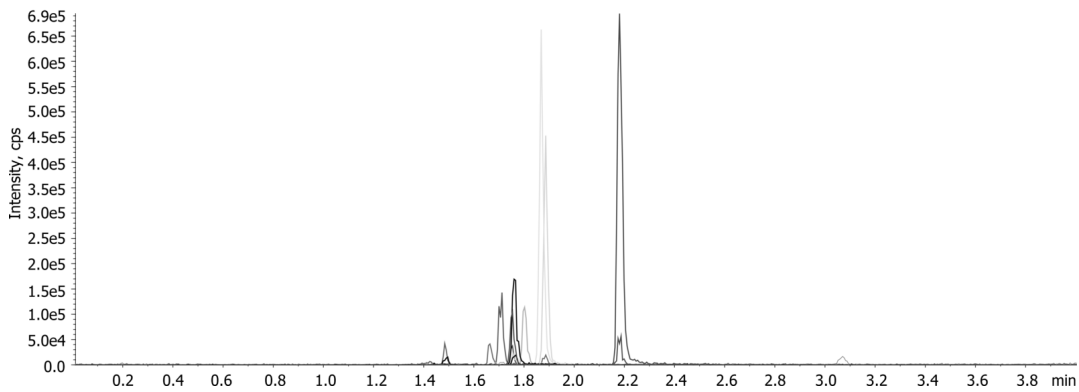
Detector Info: <a target="_blank"

24156

href="https://sciex.com/products/mass-spectrometers?utm_campaign=2019%20application%20search&utm_source=phenomenex&utm_medium=referral">SCIEX<



Products used in this application:



Workplace drug monitoring using Luna Omega 5um Polar C18 50x2.1mm

ANALYTES:

- 1** Morphine
- 2** Amphetamine
- 3** Codeine
- 4** MDA
- 5** Methamphetamine
- 6** 6-MAM
- 7** MDMA
- 8** MDEA
- 9** BZE
- 10** PCP
- 11** THC-OH

