

# HPLC Application

ID No.: 24157

## EPA 8330A on Kinetex 2.6u Polar C18 100x4.6mm

**Column:** Kinetex<sup>®</sup> 2.6 μm Polar C18 100 Å, LC Column 100 x 4.6 mm, Ea

**Dimensions:** 100 x 4.6 mm ID

**Order No:** 00D-4759-E0

**Elution Type:** Isocratic

**Eluent A:** Water

**Eluent B:** Methanol

Gradient Profile:	Step No.	Time (min)	Pct A	Pct B
	1	12	72	28

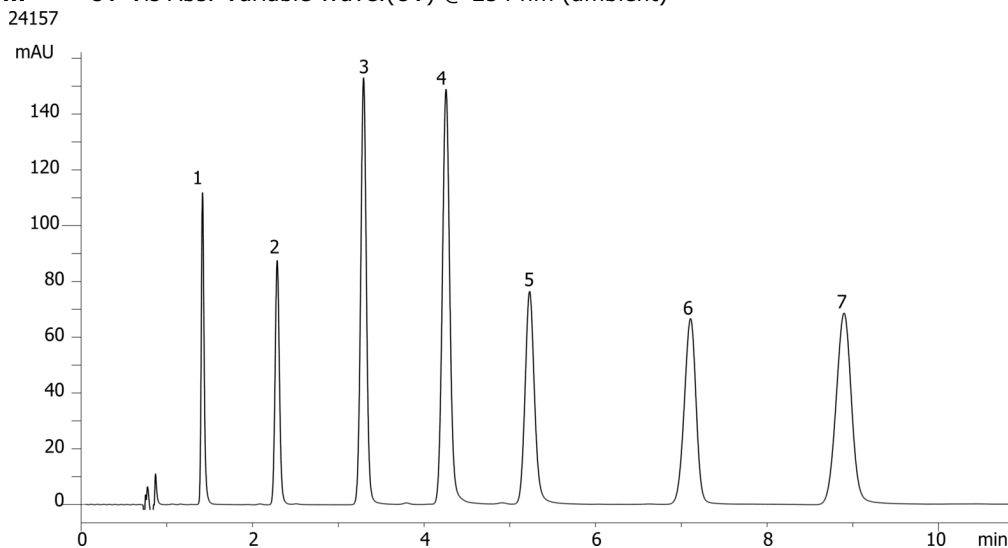
**Flow Rate:** 1.35 mL/min

**Col. Temp.:** 40 °C

**Detection:** UV-Vis Abs.-Variable Wave.(UV) @ 254 nm (ambient)



Products used in this application:



### ANALYTES:

- 1 HMX
- 2 RDX
- 3 1,3,5-Trinitrobenzene
- 4 1,3-Dinitrobenzene
- 5 Nitrobenzene
- 6 2,4,6-Trinitrotoluene
- 7 2,4-Dinitrotoluene

