

HPLC Application

ID No.: 24158

EPA 8330B on Kinetex 2.6u Polar C18 100x4.6mm

Column: Kinetex[®] 2.6 µm Polar C18 100 Å, LC Column 100 x 4.6 mm, Ea

Dimensions: 100 x 4.6 mm ID

Order No: 00D-4759-E0

Elution Type: Isocratic

Eluent A: Water

Eluent B: Methanol

Gradient Profile:	Step No.	Time (min)	Pct A	Pct B
	1	25	78	22

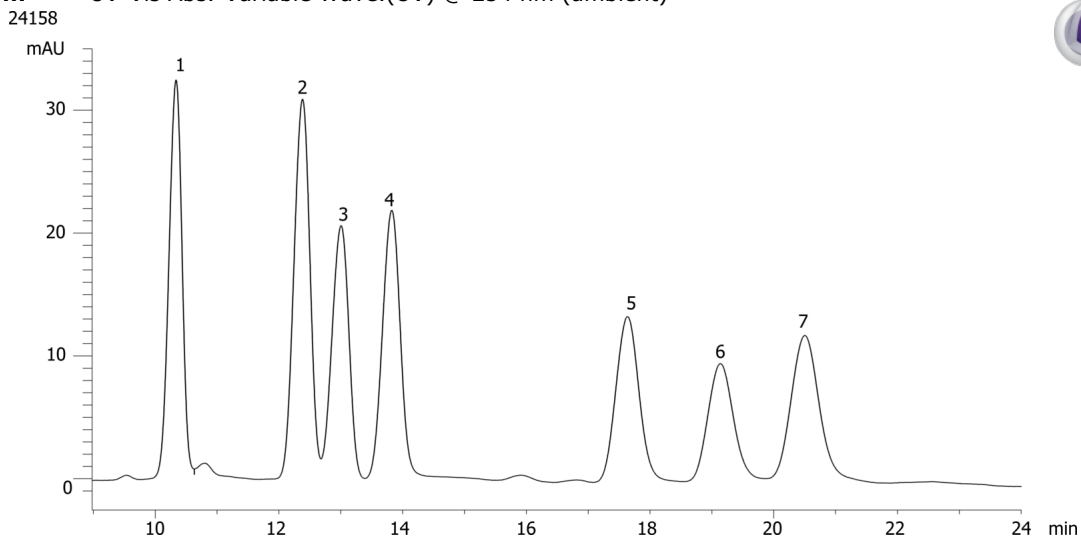
Flow Rate: 1.35 mL/min

Col. Temp.: 40 °C

Detection: UV-Vis Abs.-Variable Wave.(UV) @ 254 nm (ambient)



Products used in this application:



ANALYTES:

- 1 Tetryl
- 2 2-Amino-4,6-dinitrotolulene
- 3 4-Amino-2,6-dinitrotolulene
- 4 2,6-dinitrotolulene
- 5 2-Nitrotolulene
- 6 4-Nitrotolulene
- 7 3-Nitrotolulene

