

HPLC Application

ID No.: 24194

Chromatographic Separation of Isomeric GCDCA and GDCA on Kinetex 2.6µm Polar C18 100x2.1 Column

Column: Kinetex® 2.6 µm Polar C18 100 Å, LC Column 100 x 2.1 mm, Ea

Dimensions: 100 x 2.1 mm ID

Order No: 00D-4759-AN

Elution Type: Gradient

Eluent A: 2mM Ammonium acetate (pH 6.9)

Eluent B: Methanol/Acetonitrile (50-50)

Gradient Profile:	Step No.	Time (min)	Pct A	Pct B
	1	0	55	45
	2	9	30	70
	3	9.5	30	70
	4	9.51	55	45
	5	12	55	45

Flow Rate: 400 mL/min

Col. Temp.: 50 °C

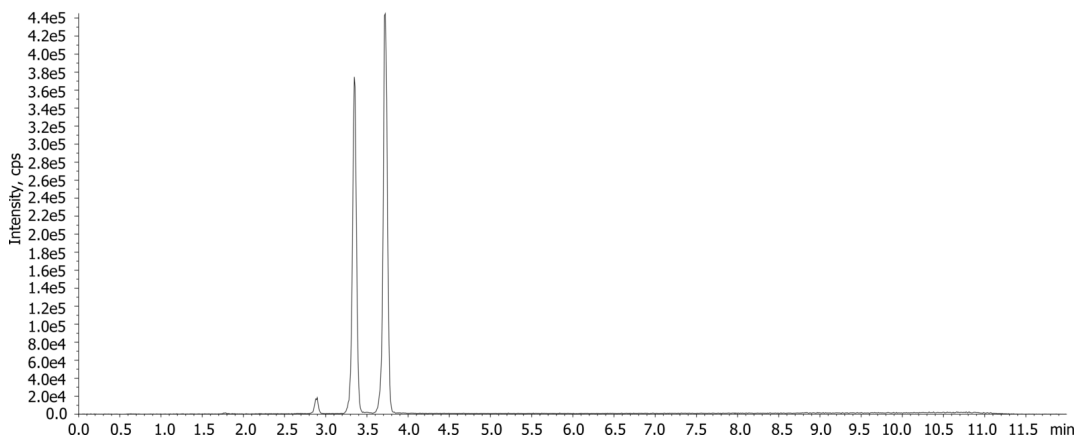
Detection: Mass Spectrometer (MS) @ amu (50 °C)

Detector Info: SCIE

24194



Products used in this application:



ANALYTES:

1 GCDCA

Retention Time: 3.35 min

2 GDCA

Retention Time: 3.7 min

