

HPLC Application

ID No.: 24218

12 Cannabinoids in MeOH using Kinetex 2.6µm Polar C18 150x4.6mm

Column: Kinetex[®] 2.6 µm Polar C18 100 Å, LC Column 150 x 4.6 mm, Ea

Dimensions: 150 x 4.6 mm ID

Order No: 00F-4759-E0

Elution Type: Gradient

Eluent A: Water with 0.1% phosphoric acid

Eluent B: Methanol

Gradient Profile:	Step No.	Time (min)	Pct A	Pct B
	1	0	15	85
	2	6	0	100

Flow Rate: 1.5 mL/min

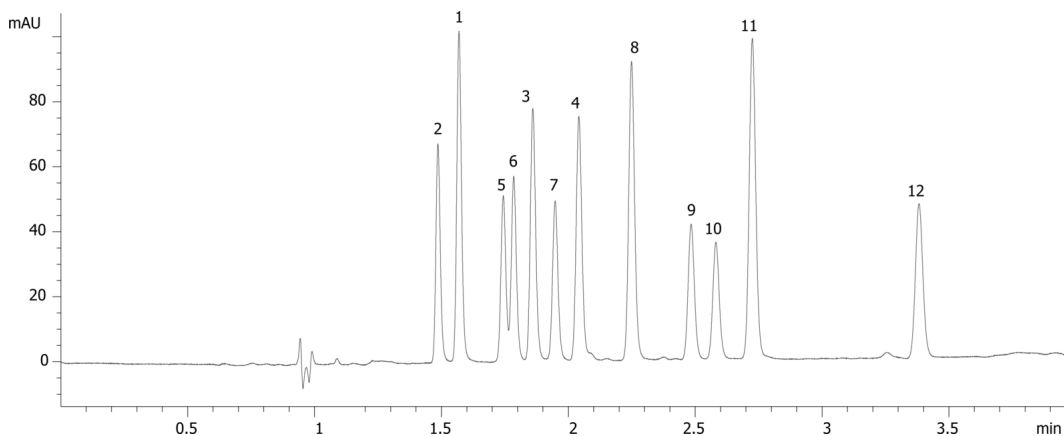
Col. Temp.: 50 °C

Detection: UV-Vis Abs.-Variable Wave.(UV) @ 210 nm (ambient)

24218



Products used in this application:



12 Cannabinoids in MeOH using Kinetex 2.6um Polar C18 150x4.6mm

ANALYTES:

- 1 CBDV
- 2 CBDV-A
- 3 CBG
- 4 CBD
- 5 CBD-A
- 6 THC-V
- 7 CBG-A
- 8 CBN
- 9 Delta-9-THC
- 10 Delta-8-THC
- 11 CBC
- 12 THC-A

