

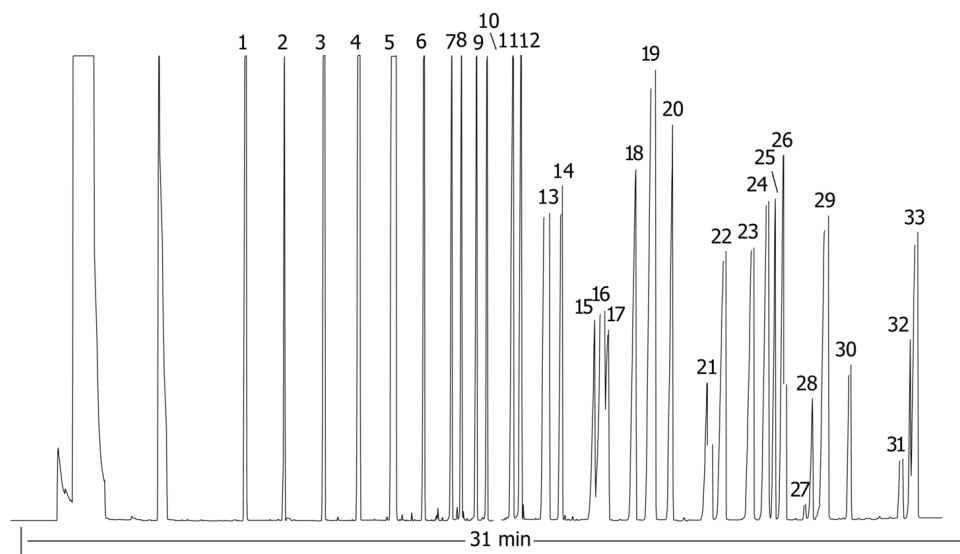
33 FAMES by GC/FID on Zebron ZB-23

Column: N/A
Phase: N/A
Dimensions: N/A
Order No: N/A
Oven Profile: N/A

Carrier Gas: N/A
Injection: N/A
Detection: N/A

Analyst Note: Recommended Accessories:
Recommended Liner: Zebron PLUS Single Taper Z-Liner, 4 mm ID
Liner Part No.: AG2-0A13-05 (for Agilent systems)
Inlet Seal: AG0-8620 (Gold Plated Easy Seal)
Septum: AG0-4696 (PhenoRed-400)

24249



33 FAMES by GC/FID on Zebron ZB-23

ANALYTES:

- 1 C8:0
- 2 C9:0
- 3 C10:0
- 4 C11:0
- 5 C12:0
- 6 C13:0
- 7 C14:0
- 8 C14:1 cis 9
- 9 C15:0
- 10 C15:1 cis 10
- 11 C16:0
- 12 C16:1 cis 9
- 13 C17:0
- 14 C17:1 cis 10
- 15 C18:0
- 16 C18:1 trans 9
- 17 C18:1 cis 9
- 18 C18:2 cis 9,12
- 19 C18:3 cis 6,9,12
- 20 C18:3 cis 9,12,15
- 21 C20:0
- 22 C20:1 cis 11
- 23 C20:2 cis 11,14
- 24 C20:3 cis 8,11,14
- 25 C20:4 cis 5,8,11,14
- 26 C20:3 cis 11,14,17
- 27 C22:0
- 28 C20:5 cis 5,8,11,14,17
- 29 C22:1 cis 13
- 30 C22:2 cis 13,16
- 31 C24:0
- 32 C22:6 cis 4,7,10,13,16,19
- 33 C24:1 cis 15

