

HPLC Application

ID No.: 24257

12 Cannabinoid Separation on Luna Omega Polar C18 3u Bio -Relevant Proportions 0.5uL Inj Volume

Column: Luna® Omega 3 µm Polar C18 100 Å, LC Column 150 x 4.6 mm, Ea

Dimensions: 150 x 4.6 mm ID

Order No: 00F-4760-E0

Elution Type: Isocratic

Eluent A: Water + 0.1% Formic Acid

Eluent B: Acetonitrile + 0.1% Formic Acid

Gradient Profile:	Step No.	Time (min)	Pct A	Pct B
	1	0	100	0

Flow Rate: 1 mL/min

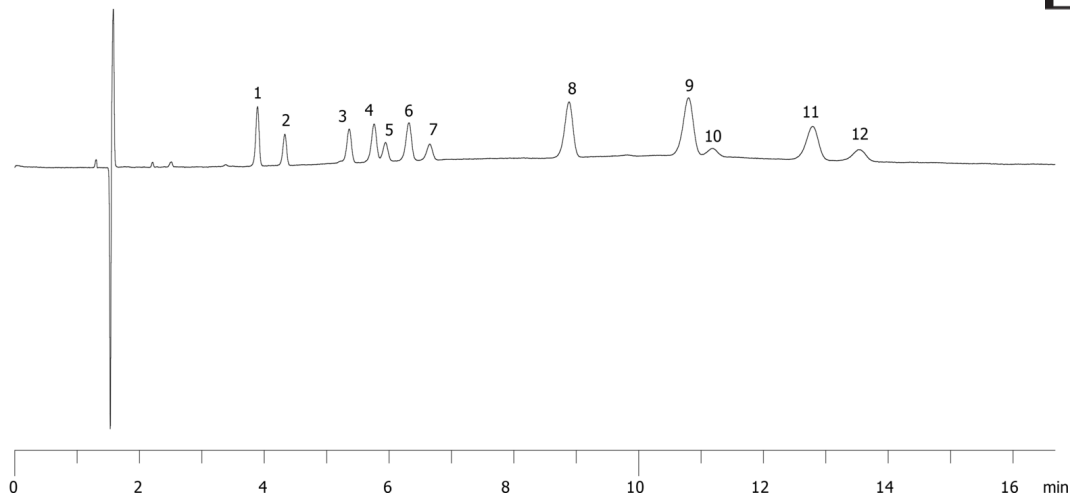
Col. Temp.: ambient

Detection: UV-Vis Abs.-Variable Wave.(UV) @ 230 nm (ambient)

24257



Products used in this application:



12 Cannabinoid Separation on Luna Omega Polar C18 3u Bio -Relevant Proportions 0.5uL Inj Volume

ANALYTES:

- 1 Cannabidiol
- 2 Cannabidiolic Acid (CBDA)
- 3 Cannabinol (CBN)
- 4 Delta-9-Tetrahydrocannabinol (THC)
- 5 Delta-9-Tetrahydrocannabinolic Acid (THCA-A)
- 6 Cannbichromene (CBC)
- 7 Cannabigerol (CBG)
- 8 Delta-8-Tetrahydrocannabinol (THC)
- 9 Cannabidivarinic Acid (CBDVA)
- 10 Cannabigerolic Acid (CBGA)
- 11 Cannabidivarin (CBDV)
- 12 Tetrahydrocannabivarin (THCV)

