

# HPLC Application

ID No.: 24270

## Water Soluble Vitamins on Kinetex 2.6u Polar 150x4.6mm

**Column:** Kinetex<sup>®</sup> 2.6  $\mu$ m Polar C18 100 Å, LC Column 150 x 4.6 mm, Ea

**Dimensions:** 150 x 4.6 mm ID

**Order No:** 00F-4759-E0

**Elution Type:** Gradient

**Eluent A:** 20mM Potassium Phosphate pH 3.5

**Eluent B:** Methanol

Gradient Profile:	Step No.	Time (min)	Pct A	Pct B
	1	0	100	0
	2	10	70	30
	3	11	70	30
	4	11.5	100	0
	5	14	100	0

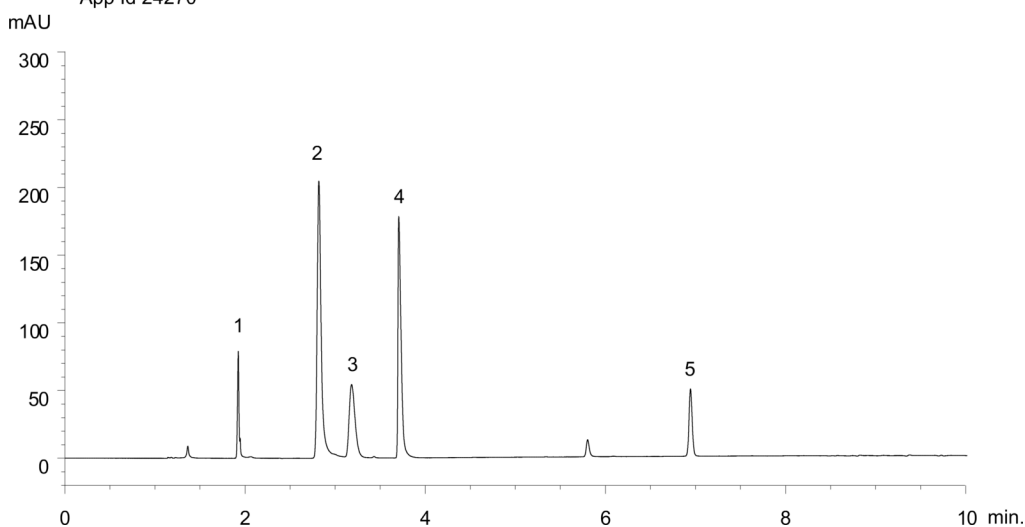
**Flow Rate:** 1.2 mL/min

**Col. Temp.:** ambient

**Detection:** UV-Vis Abs.-Variable Wave.(UV) @ 210 nm (ambient)  
App Id 24270



Products used in this application:



### ANALYTES:

- 1 Thiamine
- 2 Nicotinamide
- 3 Pyridoxal
- 4 Pyridoxine
- 5 Pantothenic Acid

