

HPLC Application

ID No.: 24276

TCAs on Kinetex 2.6µ Polar C18, 50x2.1mm (100 ng/mL)

Column: Kinetex® 2.6 µm Polar C18 100 Å, LC Column 50 x 2.1 mm, Ea

Dimensions: 50 x 2.1 mm ID

Order No: 00B-4759-AN

Elution Type: Gradient

Eluent A: 10 mM ammonium formate in water

Eluent B: 0.1% formic acid in methanol

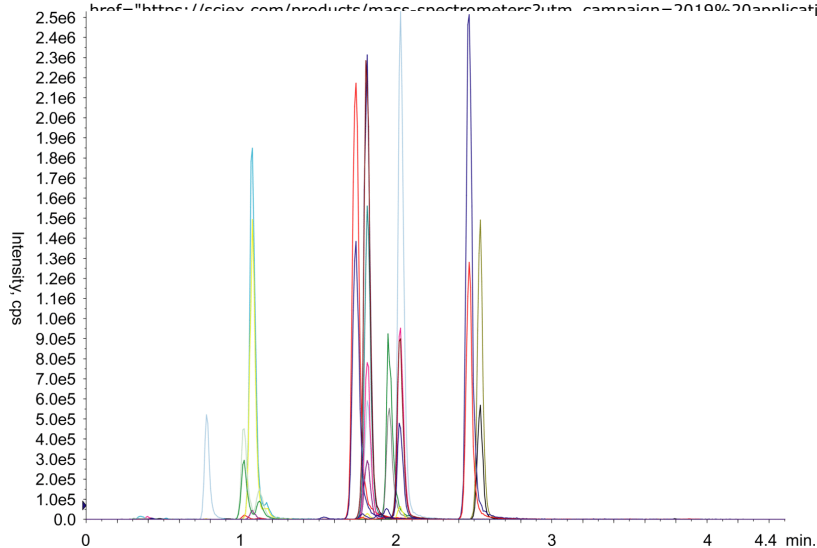
Gradient Profile:	Step No.	Time (min)	Pct A	Pct B
	1	0	55	45
	2	2	35	65
	3	2.5	5	95
	4	3	5	95
	5	3.1	55	45
	6	4.5	55	45

Flow Rate: 0.5 mL/min

Col. Temp.: 40 °C

Detection: Tandem Mass Spec (MS-MS) @ (600 °C)

Detector Info:



ANALYTES:

- 1** Nortriptyline
Retention Time: 2.03 min
- 2** Protriptyline
Retention Time: 1.81 min
- 3** Desmethyldoxepin
Retention Time: 1.07 min
- 4** Desipramine
Retention Time: 1.81 min
- 5** Amitriptyline
Retention Time: 1.95 min
- 6** Doxepin
Retention Time: 1.01 min
- 7** Imipramine
Retention Time: 1.74 min
- 8** N-Desmethylclomipramine
Retention Time: 2.54 min

©2025 Phenomenex Inc. All rights reserved.



Phenomenex products are available worldwide.

For more information contact your Phenomenex Representative at support@phenomenex.com



Products used in this application:

