

Chiral Separation of Mianserin on Lux 5µm i-Amylose-1 Stability (Before aggressive solvent exposure)

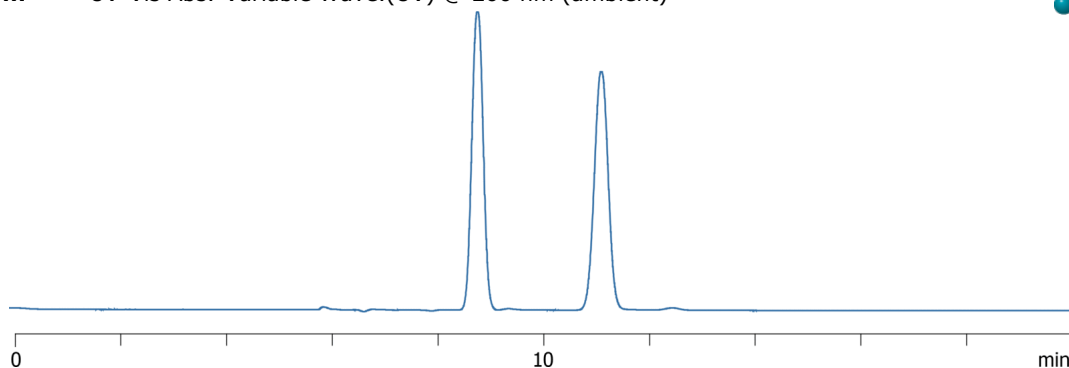
Column: Lux® 5 µm i-Amylose-1, LC Column 250 x 4.6 mm, Ea
Dimensions: 250 x 4.6 mm ID
Order No: 00G-4762-E0
Elution Type: Isocratic
Eluent A: 0.1% DEA in Hexane
Eluent B: 0.1% DEA in IPA
Gradient Profile:

Step No.	Time (min)	Pct A	Pct B
1	0	90	10

Flow Rate: 1 mL/min
Col. Temp.: ambient
Detection: UV-Vis Abs.-Variable Wave.(UV) @ 260 nm (ambient)



Products used in this application:



ANALYTES:

- 1 Mianserin
Retention Time: 4.406 min
- 2 Mianserin
Retention Time: 5.57 min

