

## Chiral Separation of Nadolol on Lux 5µm i-Amylose-1 in NP

**Column:** Lux® 5 µm i-Amylose-1, LC Column 250 x 4.6 mm, Ea

**Dimensions:** 250 x 4.6 mm ID

**Order No:** 00G-4762-E0

**Elution Type:** Isocratic

**Eluent A:** 0.1% DEA in Hexane

**Eluent B:** 0.1% DEA in IPA

Gradient Profile:	Step No.	Time (min)	Pct A	Pct B
	1	0	85	15

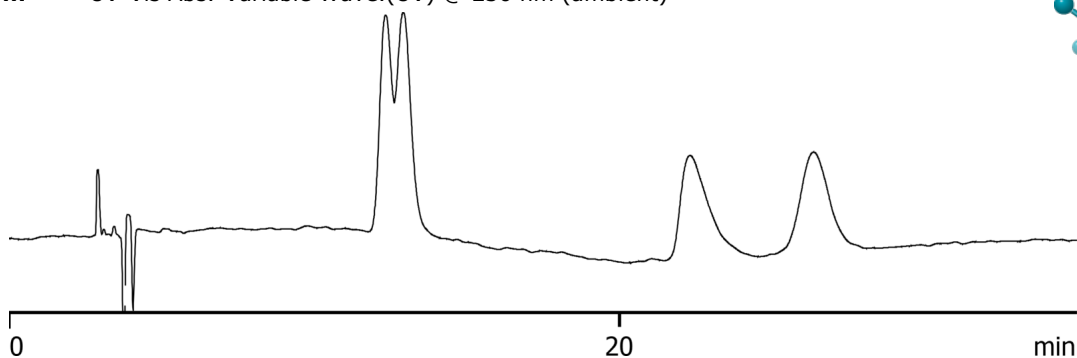
**Flow Rate:** 1 mL/min

**Col. Temp.:** ambient

**Detection:** UV-Vis Abs.-Variable Wave.(UV) @ 230 nm (ambient)



Products used in this application:



### ANALYTES:

- 1 Nadolol  
Retention Time: 12.355 min
- 2 Nadolol  
Retention Time: 12.915 min
- 3 Nadolol  
Retention Time: 22.312 min
- 4 Nadolol  
Retention Time: 26.359 min