

## Chiral Separation of Chlorpheniramine on Lux 5µm i-Amylose-1 in THF

**Column:** Lux® 5 µm i-Amylose-1, LC Column 250 x 4.6 mm, Ea

**Dimensions:** 250 x 4.6 mm ID

**Order No:** 00G-4762-E0

**Elution Type:** Isocratic

**Eluent A:** 0.1% DEA in Hexane

**Eluent B:** 0.1% DEA in THF

Gradient Profile:	Step No.	Time (min)	Pct A	Pct B
	1	0	80	20

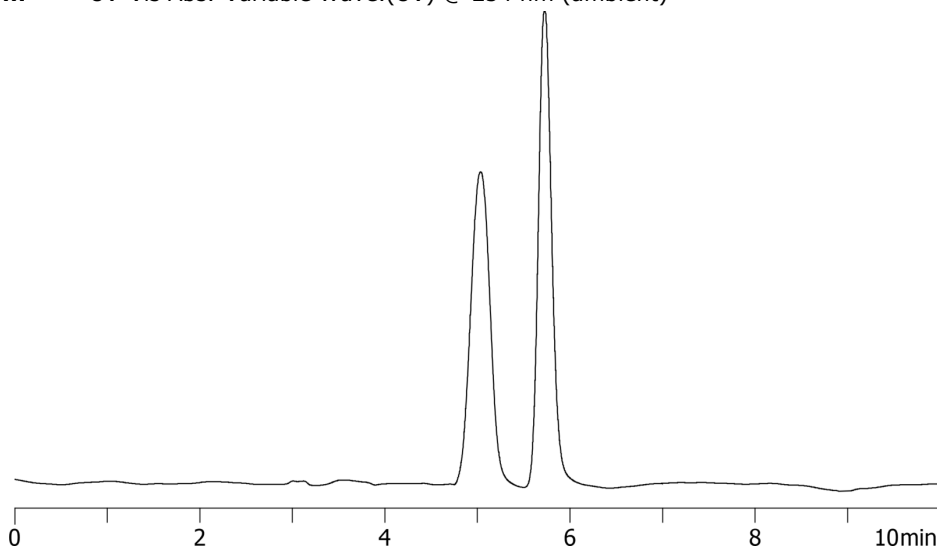
**Flow Rate:** 1 mL/min

**Col. Temp.:** ambient

**Detection:** UV-Vis Abs.-Variable Wave.(UV) @ 254 nm (ambient)



Products used in this application:



### ANALYTES:

- 1** Chlorpheniramine  
Retention Time: 5.032 min
- 2** Chlorpheniramine  
Retention Time: 5.724 min