

Chiral Separation of Disopyramide on Lux 5µm i-Amylose-1 in Ethyl Acetate

Column: Lux® 5 µm i-Amylose-1, LC Column 250 x 4.6 mm, Ea

Dimensions: 250 x 4.6 mm ID

Order No: 00G-4762-E0

Elution Type: Isocratic

Eluent A: 0.1% DEA in Hexane

Eluent B: 0.1% DEA in Ethyl Acetate

Gradient Profile:	Step No.	Time (min)	Pct A	Pct B
	1	0	60	40

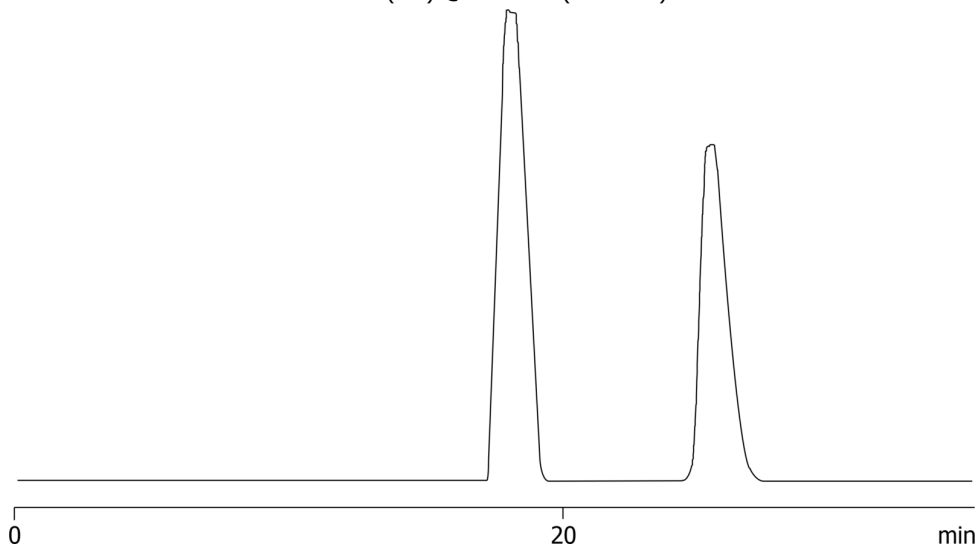
Flow Rate: 1 mL/min

Col. Temp.: ambient

Detection: UV-Vis Abs.-Variable Wave.(UV) @ 220 nm (ambient)



Products used in this application:



ANALYTES:

- 1** Disopyramide
Retention Time: 17.944 min
- 2** Disopyramide
Retention Time: 25.458 min