

Chiral Separation of 2-Bromo-1-Indanone on Lux 5µm i-Amylose-1 in Dichloromethane

Column: Lux® 5 µm i-Amylose-1, LC Column 250 x 4.6 mm, Ea

Dimensions: 250 x 4.6 mm ID

Order No: 00G-4762-E0

Elution Type: Isocratic

Eluent A: 0.1% TFA in Hexane

Eluent B: 0.1% TFA in Dichloromethane

Gradient Profile:	Step No.	Time (min)	Pct A	Pct B
	1	0	65	35

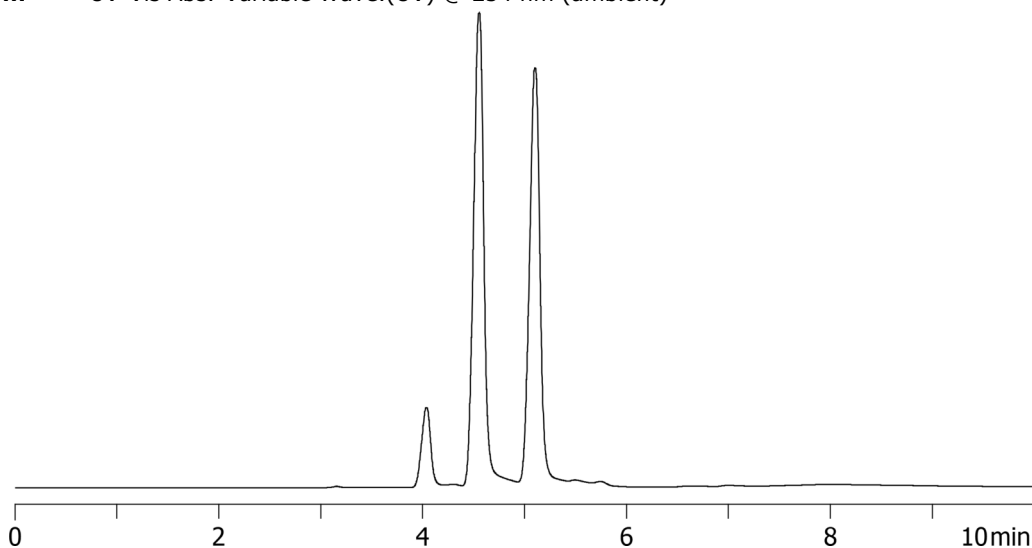
Flow Rate: 1 mL/min

Col. Temp.: ambient

Detection: UV-Vis Abs.-Variable Wave.(UV) @ 254 nm (ambient)



Products used in this application:



ANALYTES:

1 2-Bromo-1-Indanone

Retention Time: 4.552 min

2 2-Bromo-1-Indanone

Retention Time: 5.102 min

