

Chiral Separation of Indoprofen on Lux 5µm i-Amylose-1 in THF

Column: Lux® 5 µm i-Amylose-1, LC Column 250 x 4.6 mm, Ea

Dimensions: 250 x 4.6 mm ID

Order No: 00G-4762-E0

Elution Type: Isocratic

Eluent A: 0.1% TFA in Hexane

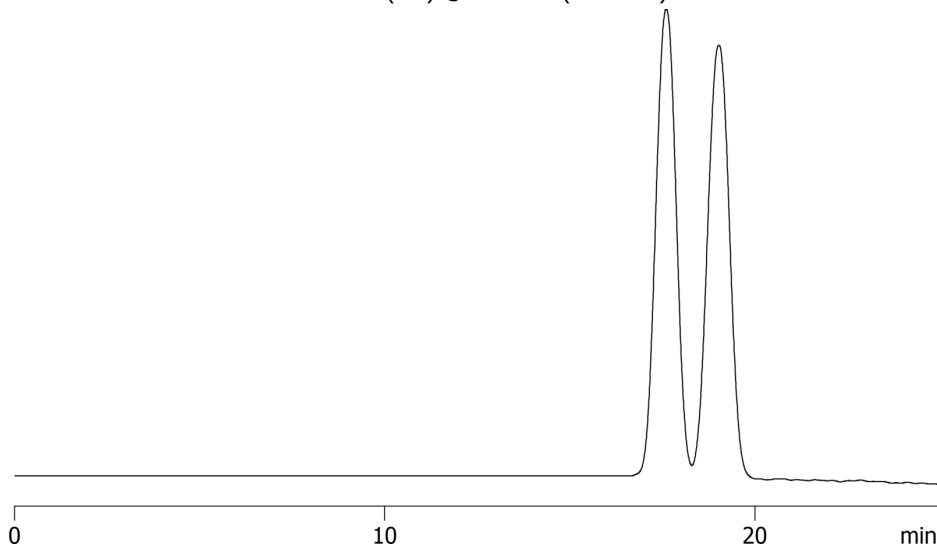
Eluent B: 0.1% TFA in THF

Gradient Profile:	Step No.	Time (min)	Pct A	Pct B
	1	0	70	30

Flow Rate: 1 mL/min

Col. Temp.: ambient

Detection: UV-Vis Abs.-Variable Wave.(UV) @ 254 nm (ambient)



ANALYTES:

- 1** Indoprofen
Retention Time: 17.601 min
- 2** Indoprofen
Retention Time: 19.022 min



Products used in this application:

