

HPLC Application

ID No.: 24319

Vitamin B2 and B3 Extracted from Human Serum

Column: Luna® Omega 3 µm Polar C18 100 Å, LC Column 50 x 4.6 mm, Ea

Dimensions: 50 x 4.6 mm ID

Order No: 00B-4760-E0

Elution Type: Gradient

Eluent A: 10 mM Ammonium formate/w 0.1%FA

Eluent B: 0.1% FA in Acetonitrile

Gradient Profile:	Step No.	Time (min)	Pct A	Pct B
	1	0.01	98	2
	2	0.5	98	2
	3	3	10	90
	4	3.5	10	90
	5	3.51	98	2
	6	5	98	2

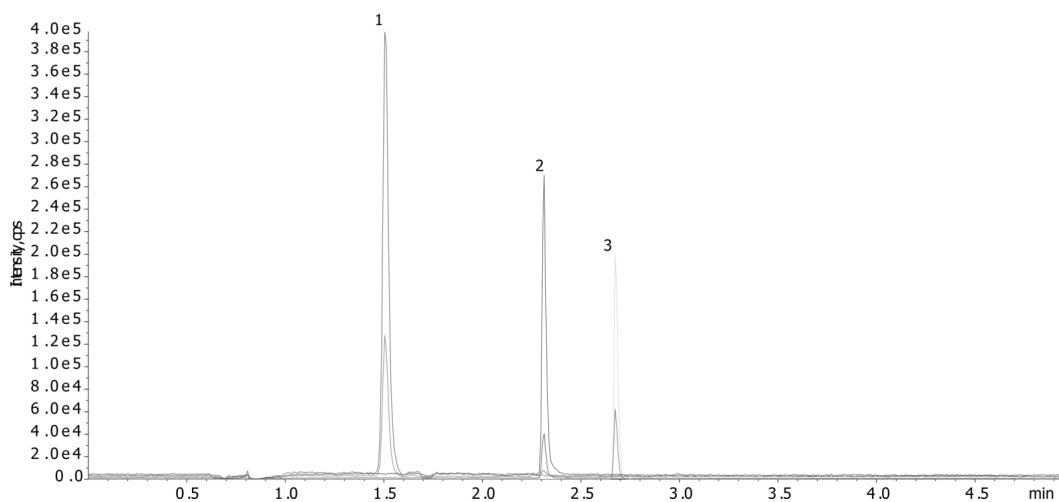
Flow Rate: 750 µL/min

Col. Temp.: 21 °C

Detection: Tandem Mass Spec (MS-MS) @ (650 °C)

Detector Info: SCIEX

24319



ANALYTES:

- 1** Nicotinic acid
Retention Time: 1.48 min
- 2** Nicotinamide
Retention Time: 2.31 min
- 3** Riboflavin
Retention Time: 2.68 min



Products used in this application:

