

# HPLC Application

ID No.: 24342

## SFC Achiral 12 cannabinoid-mix Lux Cellulose-2 meoh column

**Column:** Lux<sup>®</sup> 3  $\mu$ m Cellulose-2, LC Column 150 x 3.0 mm, Ea

**Dimensions:** 150 x 3 mm ID

**Order No:** 00F-4456-Y0

**Elution Type:** Gradient

**Eluent A:** CO<sub>2</sub>

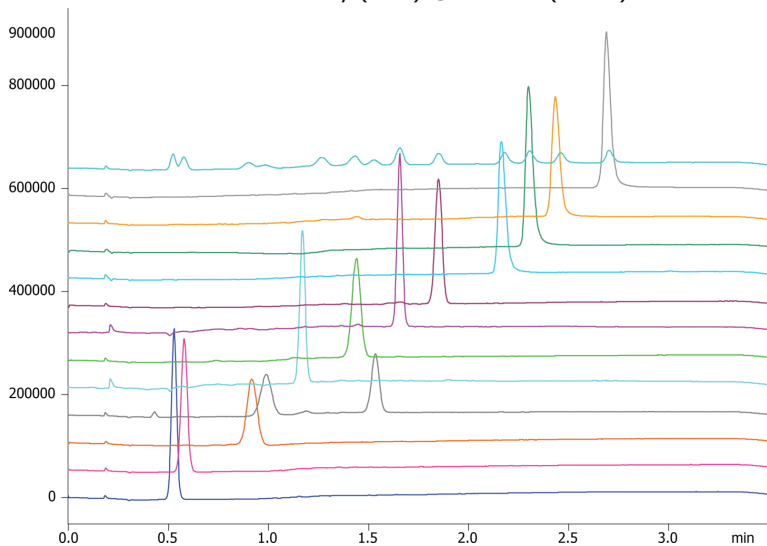
**Eluent B:** methanol

Gradient Profile:	Step No.	Time (min)	Pct A	Pct B
	1	0	96	4
	2	3	75	25
	3	3.5	75	25

**Flow Rate:** 5 mL/min

**Col. Temp.:** 40 °C

**Detection:** UV-Vis Abs.-Diode Array (PDA) @ 220 nm (40 °C)



Products used in this application:



## SFC Achiral 12 cannabinoid-mix Lux Cellulose-2 meoh column

### ANALYTES:

- 1 mix of 12 cannabinoids
- 2 CBDV
- 3 CBN
- 4 delta-8-THC
- 5 CBC enantiomer 1
- 6 CANNABADIOL
- 7 delta-9-THC
- 8 CBC enantiomer 2
- 9 THCV
- 10 CBG
- 11 CBDA
- 12 CBDVA
- 13 THCA
- 14 CBGA

