

HPLC Application

ID No.: 24346

Cannabinoids (12) using Kinetex 2.6µm C18 50x2.1mm

Column: Kinetex® 2.6 µm C18 100 Å, LC Column 50 x 2.1 mm, Ea

Dimensions: 50 x 2.1 mm ID

Order No: 00B-4462-AN

Elution Type: Gradient

Eluent A: Water with 0.1% formic acid

Eluent B: Methanol with 0.1% Formic acid

Gradient Profile:	Step No.	Time (min)	Pct A	Pct B
	1	0	40	60
	2	10	15	85

Flow Rate: 0.5 mL/min

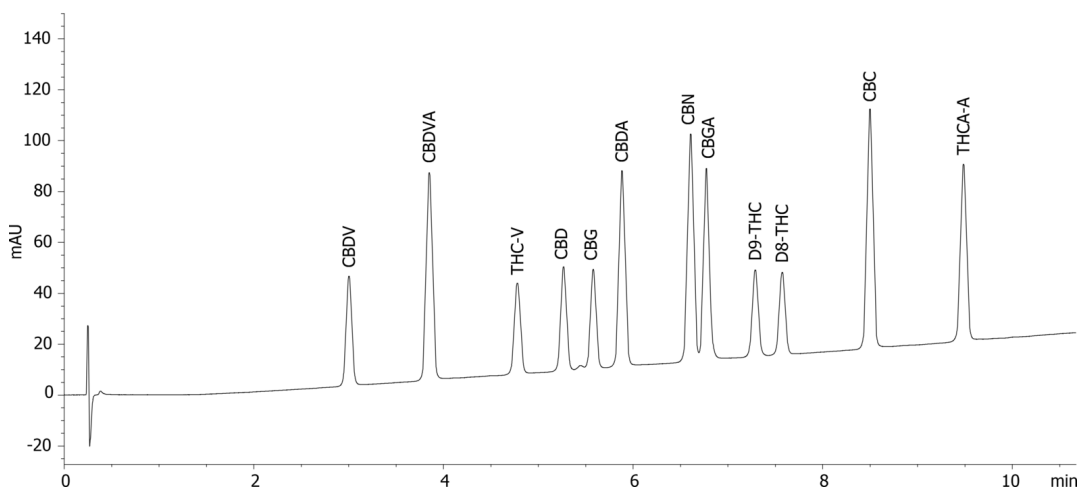
Col. Temp.: 50 °C

Detection: UV-Vis Abs.-Variable Wave.(UV) @ 230 nm (ambient)

App ID 24346



Products used in this application:



Cannabinoids (12) using Kinetex 2.6µm C18 50x2.1mm

ANALYTES:

- 1 CBDV
- 2 CBDVA
- 3 THC-V
- 4 CBD
- 5 CBG
- 6 CBDA
- 7 CBN
- 8 CBGA
- 9 d9-THC
- 10 d8-THC
- 11 CBC
- 12 THCA-A

