

# HPLC Application

ID No.: 24347

## Cannabinoids (12) using Kinetex 2.6µm Polar C18 150x4.6mm

**Column:** Kinetex® 2.6 µm Polar C18 100 Å, LC Column 150 x 4.6 mm, Ea

**Dimensions:** 150 x 4.6 mm ID

**Order No:** 00F-4759-E0

**Elution Type:** Gradient

**Eluent A:** Water with 0.1% TFA

**Eluent B:** Acetonitrile with 0.1% TFA

Gradient Profile:	Step No.	Time (min)	Pct A	Pct B
	1	0	25	75
	2	7	0	100

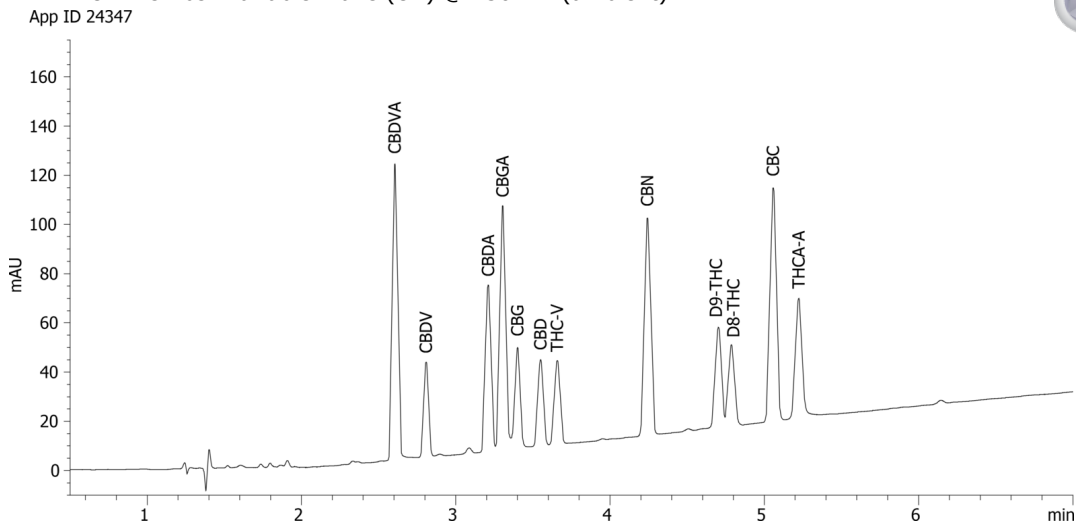
**Flow Rate:** 1 mL/min

**Col. Temp.:** 55 °C

**Detection:** UV-Vis Abs.-Variable Wave.(UV) @ 230 nm (ambient)



Products used in this application:



## Cannabinoids (12) using Kinetex 2.6um Polar C18 150x4.6mm

### ANALYTES:

- 1 CBDVA
- 2 CBDV
- 3 CBDA
- 4 CBGA
- 5 CBG
- 6 CBD
- 7 THC-V
- 8 CBN
- 9 D9-THC
- 10 D8-THC
- 11 CBC
- 12 THCA-A

