

Kinetex C18 Selectivity Tech Note - Fig 4 Kinetex XB-C18

Column: Kinetex® 2.6 µm XB-C18 100 Å, LC Column 50 x 4.6 mm, Ea

Dimensions: 50 x 4.6 mm ID

Order No: 00B-4496-E0

Elution Type: Isocratic

Eluent A: 20mM Ammonium Acetate pH 6.9

Eluent B: Methanol

Gradient Profile:	Step No.	Time (min)	Pct A	Pct B
	1	0	97	3

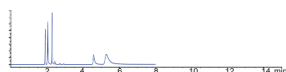
Flow Rate: 1 mL/min

Col. Temp.: 25 °C

Detection: UV-Vis Abs.-Variable Wave.(UV) @ 280 nm (ambient)



Products used in this application:



ANALYTES:

- 1 Thiourea
- 2 5-Fluorocytosine
- 3 Adenine
- 4 Thymine
- 5 Guanosine-5-Monophosphate

