

HPLC Application

ID No.: 24400

Peptide Mapping using Luna Omega 1.6um PS C18 50x2.1mm

Column: Luna Omega 1.6u PS C18 100A, LC Column 50 x 2.1 mm, Ea

Dimensions: 50 x 2.1 mm ID

Order No: 00B-4752-AN

Elution Type: Gradient

Eluent A: Water with 0.1% Formic acid

Eluent B: Acetonitrile with 0.1% Formic acid

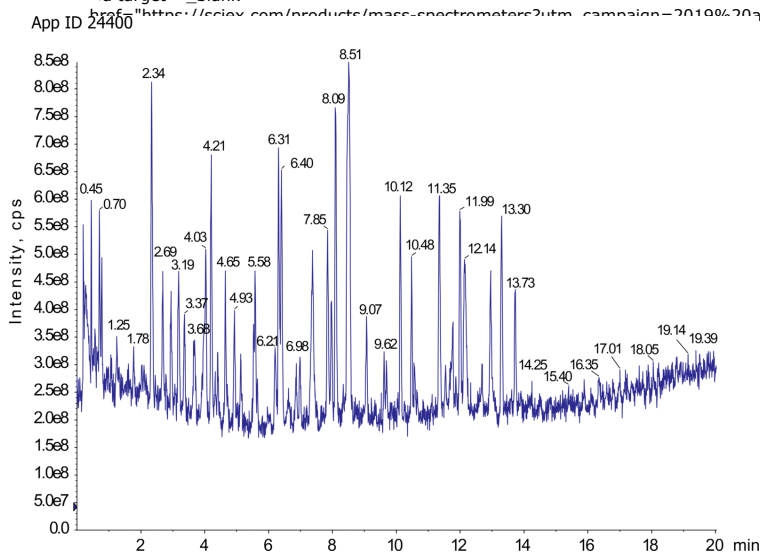
Gradient Profile:	Step No.	Time (min)	Pct A	Pct B
	1	0	97	3
	2	20	65	35

Flow Rate: 0.5 mL/min

Col. Temp.: 40 °C

Detection: Mass Spectrometer (MS) @ (ambient)

Detector Info: <a target="_blank"



ANALYTES:

- 1 BSA Tryptic digest



Products used in this application:

