

HPLC Application

ID No.: 24408

Polar bases (catecholamines) using Luna Omega 1.6um Polar C18 (100% Aqueous Start)

Column: Luna Omega 1.6 um Polar C18 100 A LC Column 50 x 2.1 mm, Ea

Dimensions: 50 x 2.1 mm ID

Order No: 00B-4748-AN

Elution Type: Gradient

Eluent A: Water with 0.1% formic acid

Eluent B: Acetonitrile with 0.1% formic acid

Gradient Profile:	Step No.	Time (min)	Pct A	Pct B
	1	0	100	0
	2	3	0	100

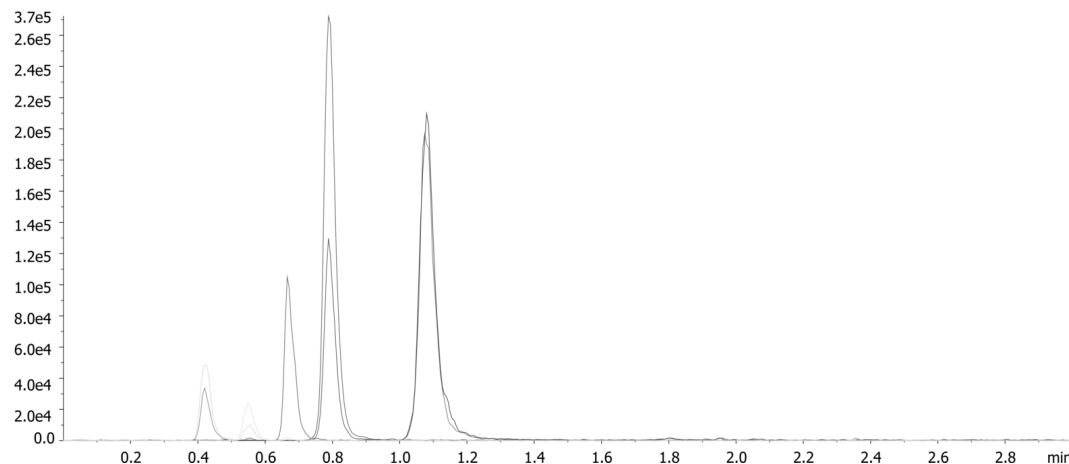
Flow Rate: 0.4 mL/min

Col. Temp.: 40 °C

Detection: Mass Spectrometer (MS) @ amu (ambient)

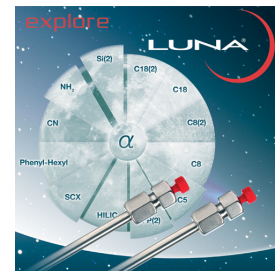
Detector Info:

24408



ANALYTES:

- 1 Norepinephrine
- 2 Epinephrine
- 3 Normetanephrine
- 4 Dopamine
- 5 Metanephrine
- 6 3-Hydroxytyramine



Products used in this application:

