

Chiral Separation of Naproxen on Lux 5 μ m i-Amylose-1 in Dichloromethane

Column: Lux® 5 μ m i-Amylose-1, LC Column 250 x 4.6 mm, Ea

Dimensions: 250 x 4.6 mm ID

Order No: 00G-4762-E0

Elution Type: Isocratic

Eluent A: 35:65:1 Hexane/DCM/IPA (0.1% TFA)

Gradient	Step No.	Time (min)	Pct A
Profile:	1	0	100

Flow Rate: 1 mL/min

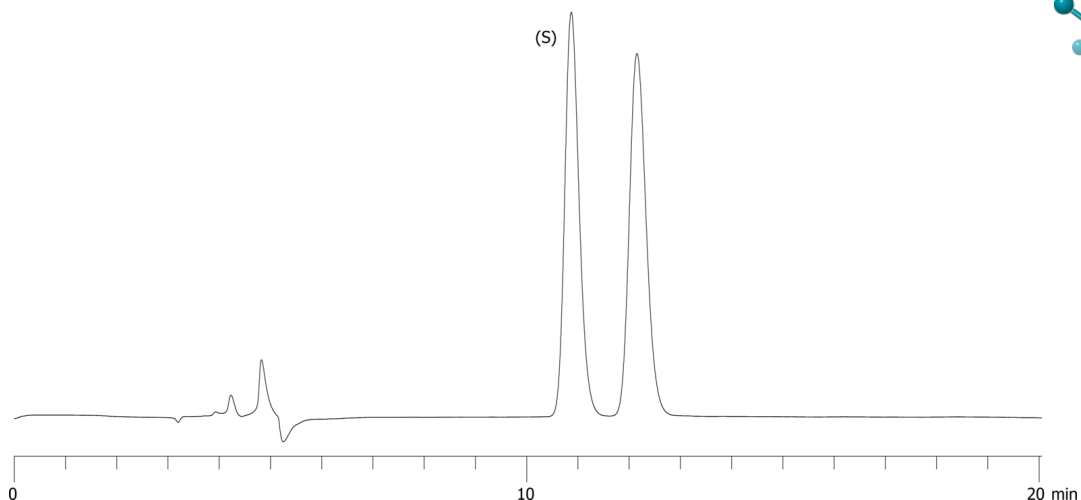
Col. Temp.: ambient

Detection: UV-Vis Abs.-Variable Wave.(UV) @ 254 nm (ambient)

24418



Products used in this application:



ANALYTES:

- 1** S-Naproxen [Sigma-Cat# Y0000399]

Retention Time: 10.868 min

- 2** R-Naproxen [Sigma-Cat# Y0000399]

Retention Time: 12.15 min

