

# HPLC Application

ID No.: 24462

## Naltrexone on Beta Gane with Kura Enzyme

**Column:** Kinetex® 2.6 µm Biphenyl 100 Å, LC Column 50 x 2.1 mm, Ea

**Dimensions:** 50 x 2.1 mm ID

**Order No:** 00B-4622-AN

**Elution Type:** Gradient

**Eluent A:** 0.1% Formic Acid in Water

**Eluent B:** 01.% Formic acid in methanol

Gradient Profile:	Step No.	Time (min)	Pct A	Pct B
	1	0	95	5
	2	2	0	100
	3	2.1	95	5
	4	4	95	5

**Flow Rate:** 0.5

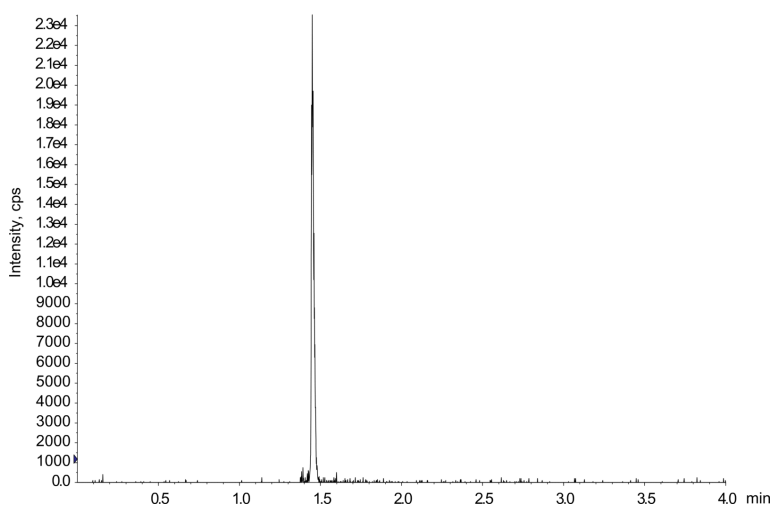
**Col. Temp.:** ambient

**Detection:** Tandem Mass Spec (MS-MS) @ (ambient)

App ID 24462



Products used in this application:



### ANALYTES:

1 naltrexone

Retention Time: 1.45 min

