

Cannabis pesticide screening using Kinetex 2.6 µm Biphenyl 50 x4.6 mm

Column: Kinetex® 2.6 µm Biphenyl 100 Å, LC Column 50 x 4.6 mm, Ea

Dimensions: 50 x 4.6 mm ID

Order No: 00B-4622-E0

Elution Type: Gradient

Eluent A: 5mM Ammonium Formate + 0.1% Formic Acid in Water

Eluent B: 5mM Ammonium Formate + 0.1% formic acid in methanol 98:2

Gradient Profile:	Step No.	Time (min)	Pct A	Pct B
	1	0	90	10
	2	1	90	10
	3	4.3	20	80
	4	8.7	5	95
	5	10.5	5	95
	6	10.6	90	10
	7	16	90	10

Flow Rate: 0.4 mL/min

Col. Temp.: 40 °C

Detection: Tandem Mass Spec (MS-MS) @ (ambient)

Detector Info:

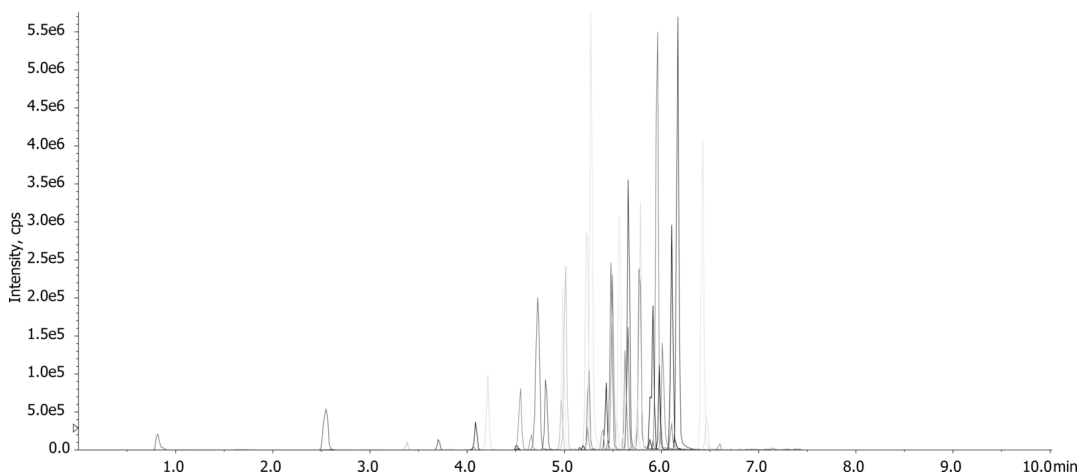
<a target="_blank"

href="https://sciex.com/products/mass-spectrometers?utm_campaign=2019%20application%20search&utm_source=phenomenex&utm_medium=referral">SCIEEX<

24477



Products used in this application:



Cannabis pesticide screening using Kinetex 2.6 µm Biphenyl 50 x4.6 mm

ANALYTES:

1 Acephate	41 Oxamyl
2 Acequinocyl	42 Paclbutrazol
3 Acetamiprid	43 Parathion-methyl
4 Aldicarb	44 Permethrin, cis-
5 Avermectin B1a	45 Permethrin, trans-
6 Avermectin B1b	46 Phosmet
7 Azoxystrobin	47 Piperonyl butoxide
8 Bifenazate	48 Prallethrin
9 Bifenthrin	49 Propiconazole
10 Boscalid	50 Propoxure
11 Carbaryl	51 Pyrethrins Cinerin
12 Carbofuran	52 Pyrethrins Jasmolin
13 Chlorantraniliprole	53 Pyrethrins Pyrethrin
14 Chlorpyrifos	54 Pyridaben
15 Clofentezine	55 Spinosyn A
16 Cyfluthrin	56 Spinosyn D
17 Cypermethrin	57 Spiromesifen
18 Daminozide	58 Spirotetramat
19 Diazinon	59 Spiroxamine
20 Dichlorvos	60 Tebuconazole
21 Dimethoate	61 Thiacloprid
22 Ethoprophos	62 Thiamethoxam
23 Etofenprox	63 Trifloxystrobin
24 Etoxazole	64 Uniconazole
25 Fenoxycarb	
26 Fenpyroximate	
27 Fipronil	
28 Fipronil NH4	
29 Flonicamid	
30 Fludioxinil	
31 Hexythiazox	
32 Imazalil	
33 Imidacloprid	
34 Kresoxim-methyl	
35 Malathion A	
36 Metalaxyl	
37 Methiocarb	
38 Methomyl	
39 Myclobutanil	
40 Naled	

