

# HPLC Application

ID No.: 24484

## Barbs Novum pH 9

**Column:** Kinetex® 2.6µm EVO C18 100 Å, LC Column 50 x 2.1 mm, Ea

**Dimensions:** 50 x 2.1 mm ID

**Order No:** 00B-4725-AN

**Elution Type:** Gradient

**Eluent A:** 10mM Ammonium Bicarbonate pH 9

**Eluent B:** Acetonitrile

Gradient Profile:	Step No.	Time (min)	Pct A	Pct B
	1	0	95	5
	2	2	85	15
	3	5	80	20
	4	5.01	40	60
	5	6	40	60
	6	6.1	95	5
	7	7.5	95	5



Products used in this application:



**Flow Rate:** 0.5 mL/min

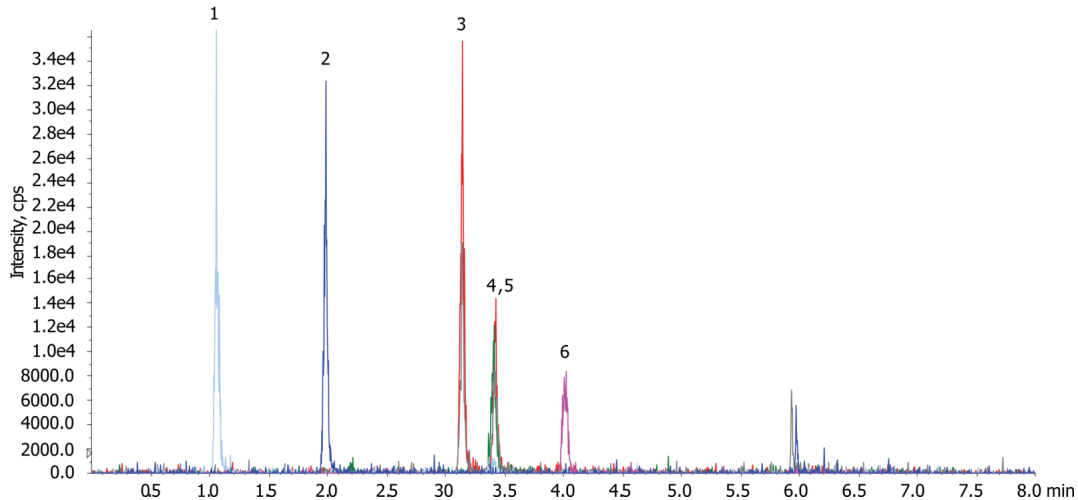
**Col. Temp.:** ambient

**Detection:** Tandem Mass Spec (MS-MS) @ (ambient)

**Detector Info:**

24484

[https://sciex.com/products/mass-spectrometers?utm\\_campaign=2019%20application%20search&utm\\_source=phenomenex&utm\\_medium=referral](https://sciex.com/products/mass-spectrometers?utm_campaign=2019%20application%20search&utm_source=phenomenex&utm_medium=referral)>SCIEEX<



### ANALYTES:

- 1** Phenobarbital  
Retention Time: 1.06 min
- 2** Butabital  
Retention Time: 1.99 min
- 3** Pentobarbital  
Retention Time: 3.14 min
- 4** Amobarbital  
Retention Time: 3.41 min
- 5** Amobarbital D5  
Retention Time: 3.41 min
- 6** Secobarbital  
Retention Time: 4 min

