

HPLC Application

ID No.: 24485

Nor/Buep + THC-COOH Novum ESI+

Column: Kinetex® 2.6 µm Biphenyl 100 Å, LC Column 50 x 2.1 mm, Ea

Dimensions: 50 x 2.1 mm ID

Order No: 00B-4622-AN

Elution Type: Gradient

Eluent A: 0.1% formic acid in water

Eluent B: 0.1% formic acid in acetonitrile

Gradient Profile:	Step No.	Time (min)	Pct A	Pct B
	1	0	95	5
	2	5	0	100
	3	5.1	95	5
	4	7	95	5

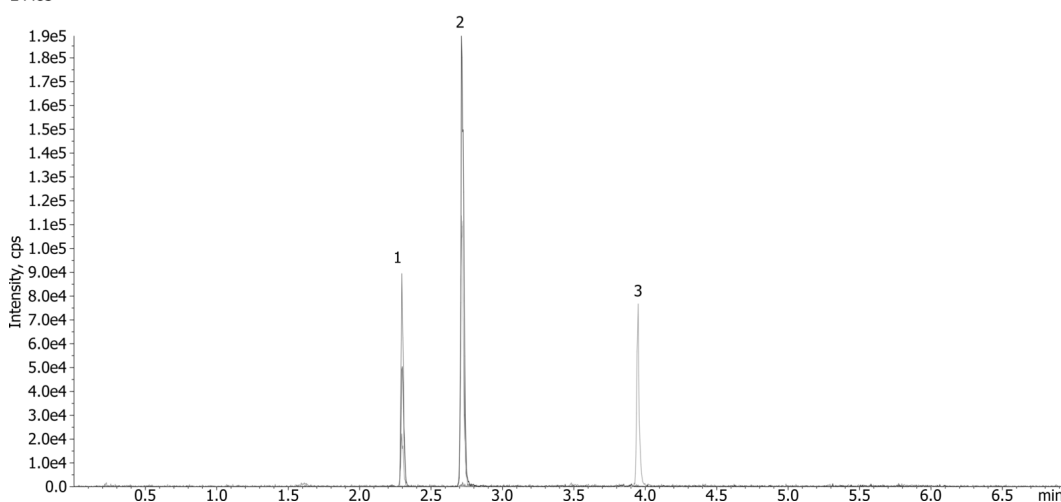
Flow Rate: 0.5 mL/min

Col. Temp.: ambient

Detection: Tandem Mass Spec (MS-MS) @ (ambient)

Detector Info: SCIEX<

24485



ANALYTES:

- 1** Norbuprenorphine
Retention Time: 2.31 min
- 2** Buprenorphine
Retention Time: 2.71 min
- 3** THC-COOH
Retention Time: 3.95 min



Products used in this application:

