

HPLC Application

ID No.: 24489

5-ALA & PBG on Luna Omega 3µm Polar C18, 150x4.6mm

Column: Luna® Omega 3 µm Polar C18 100 Å, LC Column 150 x 4.6 mm, Ea

Dimensions: 150 x 4.6 mm ID

Order No: 00F-4760-E0

Elution Type: Gradient

Eluent A: 0.1% Formic acid in water

Eluent B: 0.1% Formic acid in methanol

Gradient Profile:	Step No.	Time (min)	Pct A	Pct B
	1	0	98	2
	2	0.5	98	2
	3	4.2	10	90
	4	4.21	10	90
	5	6	98	2

Flow Rate: 0.7 mL/min

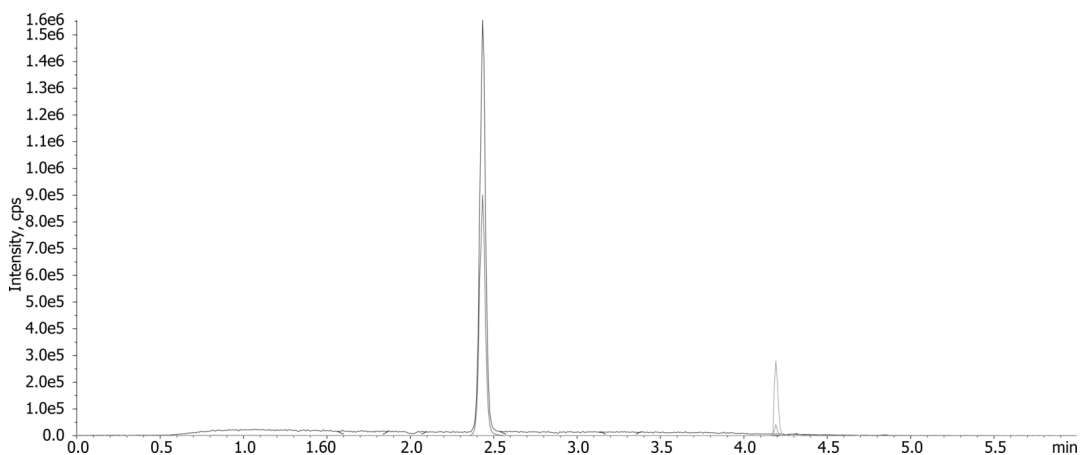
Col. Temp.: ambient

Detection: Tandem Mass Spec (MS-MS) @ (ambient)

Detector Info: SCIEX
24489



Products used in this application:



ANALYTES:

1 Aminolevulinic acid

Retention Time: 2.43 min

2 Porphobilinogen

Retention Time: 4.19 min

