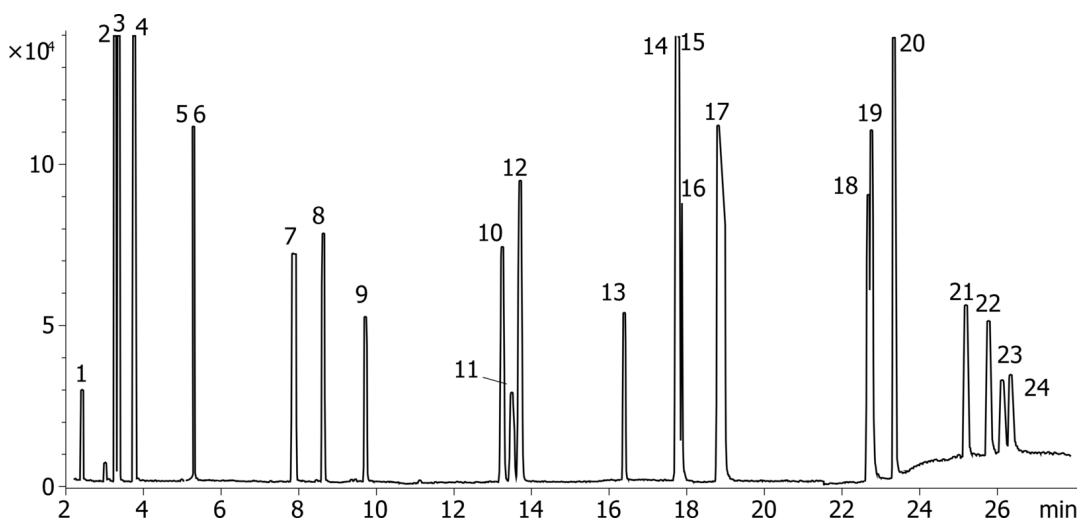


## 15 + 1 PAH standards analysis (Food Quality & ENV) using ZB-PAH

**Column:** N/A  
**Phase:** N/A  
**Dimensions:** N/A  
**Order No:** N/A  
**Oven Profile:** N/A

**Carrier Gas:** N/A  
**Injection:** N/A  
**Detection:** N/A

**Analyst Note:** Column used is part# 7FD-G038-47  
Scan Mode 50 amu - 400 amu  
Transfer Line: 340°C  
Source: 340°C  
Quads: 150°C  
APP -5990-5872EN



## 15 + 1 PAH standards analysis (Food Quality & ENV) using ZB-PAH

### ANALYTES:

- 1 Naphtalene
- 2 Acenaphthylene
- 3 Acenaphtene
- 4 Fluorene
- 5 Phenanthrene
- 6 Anthracene
- 7 Flouranthene
- 8 Pyrene
- 9 Benzo[c]fluorene
- 10 Benza[a]anthracene
- 11 Cyclopenta[c,d]pyrene
- 12 Chrysene
- 13 5-Methylchrysene
- 14 Benzo[b]fluorathene
- 15 Benzo[k]fluoranthene
- 16 Benzo[j]fluoranthene
- 17 Benzo[a]pyrene
- 18 Indeno[1,2,3-cd]pyrene
- 19 Dibenz[a,h]anthracene
- 20 Benzo[g,h,i]perylene
- 21 Dibenzo[a,l]pyrene
- 22 Dibenzo[a,e]pyrene
- 23 Dibenzo[a,i]pyrene
- 24 Dibenzo[a,h]pyrene

