

Chiral Separation of Aminoglutethimide on Lux 5 μ m i-Amylose-1 in NP

Column: Lux® 5 μ m i-Amylose-1, LC Column 250 x 4.6 mm, Ea

Dimensions: 250 x 4.6 mm ID

Order No: 00G-4762-E0

Elution Type: Isocratic

Eluent A: Ethyl Acetate

Gradient	Step No.	Time (min)	Pct A
Profile:	1	0	100

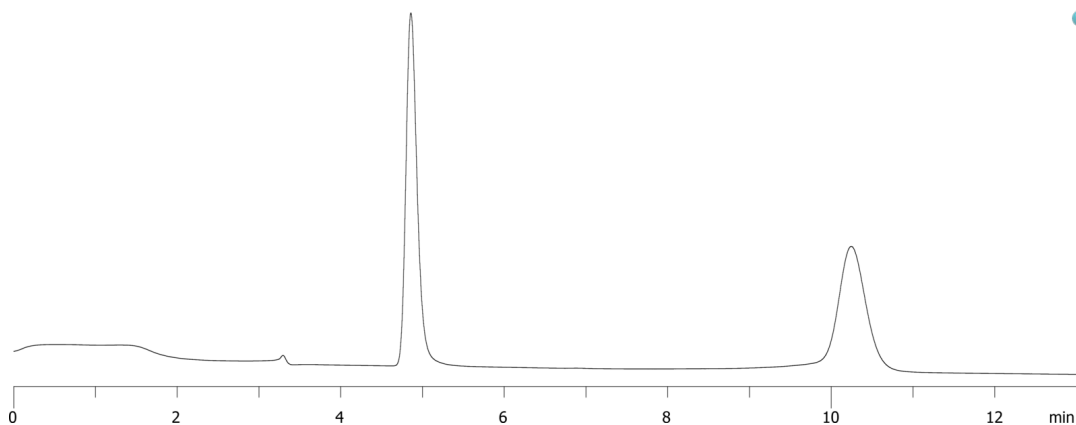
Flow Rate: 1 mL/min

Col. Temp.: ambient

Detection: UV-Vis Abs.-Variable Wave.(UV) @ 254 nm (ambient)
24497



Products used in this application:



ANALYTES:

- 1 Aminoglutethimide
Retention Time: 4.856 min
- 2 Aminoglutethimide
Retention Time: 10.243 min

