

HPLC Application

ID No.: 24507

Chiral Separation of Omeprazole on Lux 5µm i-Amylose-1 in NP

Column: Lux® 5 µm i-Amylose-1, LC Column 250 x 4.6 mm, Ea

Dimensions: 250 x 4.6 mm ID

Order No: 00G-4762-E0

Elution Type: Isocratic

Eluent A: 0.1% Ethanolamine in DCM

Gradient	Step No.	Time (min)	Pct A
Profile:	1	0	100

Flow Rate: 1 mL/min

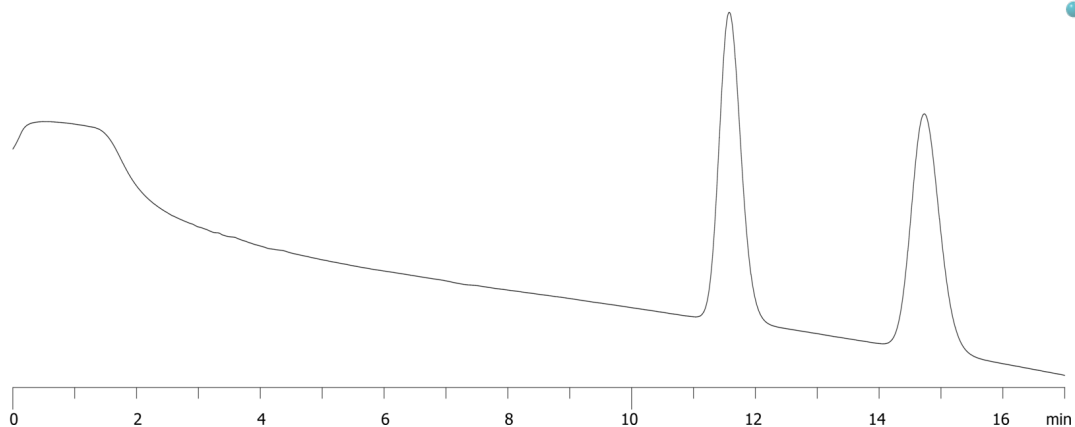
Col. Temp.: ambient

Detection: UV-Vis Abs.-Variable Wave.(UV) @ 254 nm (ambient)

24507



Products used in this application:



ANALYTES:

- 1** Omeprazole
Retention Time: 11.576 min
- 2** Omeprazole
Retention Time: 14.728 min