

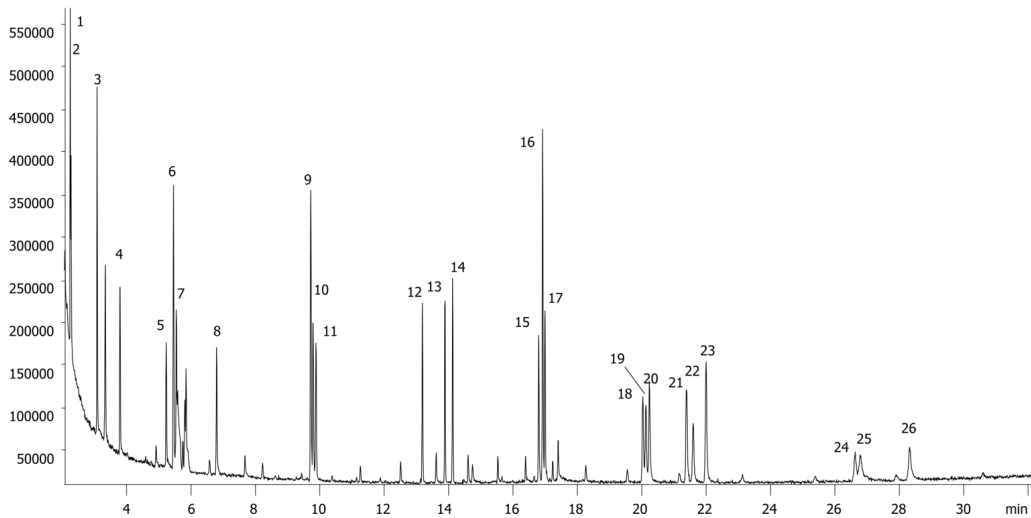
## GC/MS analysis of PAH in rubber and plastic on ZB-PAH

**Column:** N/A  
**Phase:** N/A  
**Dimensions:** N/A  
**Order No:** N/A  
**Oven Profile:** N/A

**Carrier Gas:** N/A  
**Injection:** N/A  
**Detection:** N/A

**Analyst Note:** Sample Preparation:  
1. Cut sample of rubber in 2 - 3mm pieces  
2. Collect ~0.5g of cut pieces per extraction  
3. Add 20mL of toluene  
4. Add internal standard  
5. Sonicate for 1 hour at 60°C  
6. Cool and transfer aliquot to autosampler vial

24508



## GC/MS analysis of PAH in rubber and plastic on ZB-PAH

### ANALYTES:

- 1 Naphthalene-d8
- 2 Naphthalene
- 3 2-methylnaphthalene
- 4 1-methylnaphthalene
- 5 Acenaphthylene
- 6 Acenaphthylene-d10
- 7 aCENAPHTHENE
- 8 Fluorene
- 9 Phenanthrene-d10
- 10 Phenanthrene
- 11 Anthracene
- 12 Fluoranthene
- 13 Pyrene
- 14 p-Terphenyl-d14
- 15 Benzo(a)anthracene
- 16 Chrysene-d12
- 17 Chrysene
- 18 Benzo(b)fluoranthene
- 19 Benzo(k)fluoranthene
- 20 Benzo(j)fluoranthene
- 21 Benzo(e)pyrene
- 22 Benzo(a)pyrene
- 23 Perylene-d12
- 24 Indeno(1,2,3-cd)pyrene
- 25 Dibenzo(a,h)anthracen
- 26 Benzo(g,h,i)perylene

