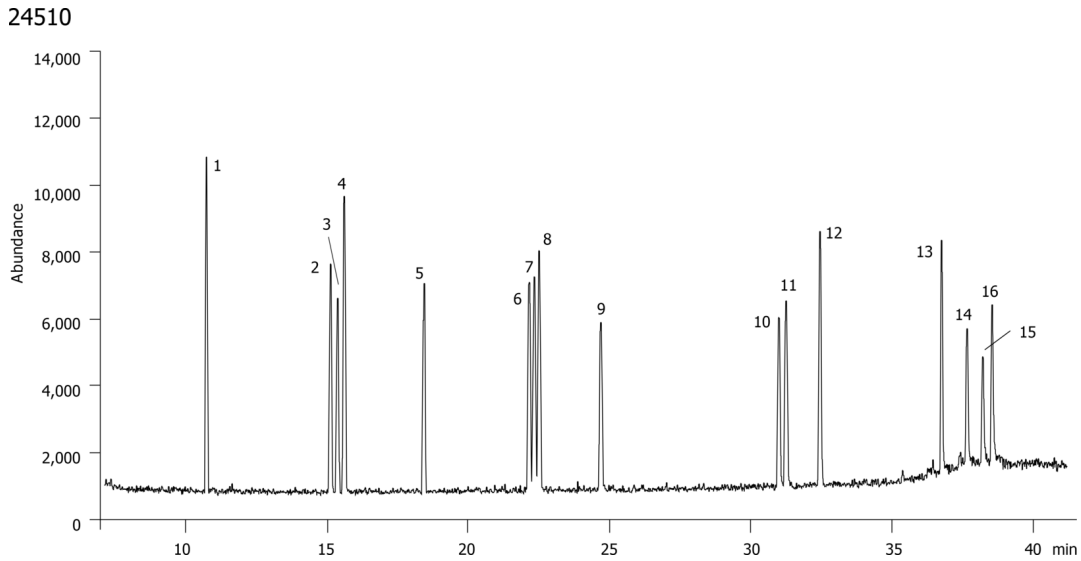


GC/MS analysis of 15+1 EU of PAH in ENV using ZB-PAH

Column: N/A
Phase: N/A
Dimensions: N/A
Order No: N/A
Oven Profile: N/A

Carrier Gas: N/A
Injection: N/A
Detection: N/A

Analyst Note: used columns FD-G038-47
APP NOTE (5990-4883EN)



GC/MS analysis of 15+1 EU of PAH in ENV using ZB-PAH

ANALYTES:

- 1 Benzo[c]fluorene
- 2 Benz[a]anthracene
- 3 Cyclopenta[c,d]pyrene
- 4 Chrysene
- 5 5-Methylchrysene
- 6 Benzo[b]fluoranthene
- 7 Benzo[k]fluoranthene
- 8 Benzo[j]fluoranthene
- 9 Benz[a]pyrene
- 10 Indeno[1,2,3-cd]pyrene
- 11 Dibenzo[a,h]anthracene
- 12 Benzo[g,h,i]perylene
- 13 Dibenzo[a,l]pyrene
- 14 Dibenzo[a,e]pyrene
- 15 Dibenzo[a,i]pyrene
- 16 Dibenzo[a,lh]pyrene

